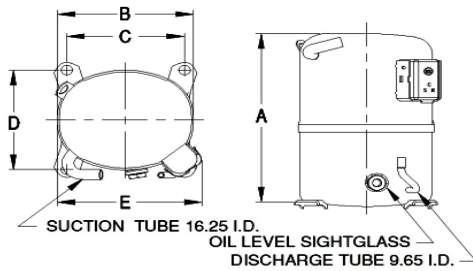


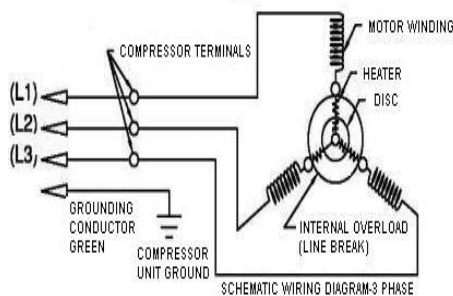


PRINCIPAL DIMENSIONS - mm



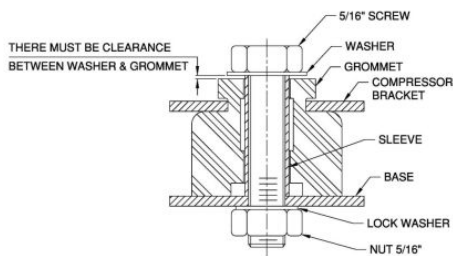
A: 324	B: 223	C: 191	D: 191	E: 239
--------	--------	--------	--------	--------

SCHEMATIC WIRING DIAGRAM 3 PHASE



SCHEMATIC WIRING DIAGRAM -

MOUNTING KIT



Electrical : 380-420 V/50 Hz., 460 V/60 Hz. 3 Phase

Nominal Performance

Capacity	2,393 / 2,544 Watts
	8,165 / 8,680 BTU/Hr
	2,058 / 2,188 Kcal/Hr
Power Input	1,560 / 1,725 Watts
Locked Rotor Amps	30.50 / 30.50 Amps
Max Continuous Current	- / - Amps
Rated Load Amps	3.00 / 3.00 Amps
COP	1.53 / 1.47 Watts / Watts
EER	5.23 / 5.03 BTU/W-Hr

Testing Conditions

Condensing Temperature	54.40 °C	129.9 °F
Evaporating Temperature	-23.30 / - °C	-9.9 / - °F
Liquid Temperature	32.20 °C	90.0 °F
Return Gas Temperature	32.20 °C	90.0 °F
Ambient Temperature	32.20 °C	90.0 °F

Application

Evaporating Temp. Range	LBP	@ -34.40 °C to -12.20 °C (-29.9° F to 10.0° F)
	Heat Pump	- °C to - °C (-° F to -° F)
Refrigerant	R404A	
Refrigerant Flow Control	Capillary Tube	
Compressor Cooling	Fan	

Compressor and Motor data

Compressor Type	Reciprocating
Displacement	53.50 cc.
Oil Type	Polyolester Oil
Oil Charge	1,067 cc.
Motor Type	3 PHASE ; 2 Pole 2,850 / 3,500 r/m
Voltage Range	342-456/394-552 Volts 50/60 Hz.

Winding Resistance at 25 ° C

L1-L2	5.23 Ohms
L1-L3	6.04 Ohms
L2-L3	6.01 Ohms

Weight with Oil	27.75 Kg.
Weight with Oil and Accessories	27.91 Kg.

Electrical Components

Motor Protector

Type	Internal Overload
Model Number	4042KGE658-1
Open / Close	120-130 / 52-70 °C
1st Cycle trip at 25 ° C	27.00 Amps(main) - Amps(start)

Motor Starter (CSR Only)

Type	-
Model Number	-
Pick Up (max.)	- Volts
Drop Out (min.)	- Volts
Terminal Cover	KGM 901-2
Start Capacitor (CSR Only)	- µF - VAC.
Disch Resistor for Start Cap	-
Run Capacitor	- µF - VAC.

Mounting Kit

Rubber Grommet	4007KGM905-2
Sleeve Grommet	4023KGM903-2
Washer	-

Since we are constantly improving our product , the specification are subject to change without notice.

REV. DATE
ECN 13-10-17

C / N No.
ECN 0394/17

Certificate Marks



RoHS