



# HVY44AA.02

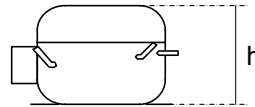
## PRODUCT SPECIFICATION

### OPERATION:

Application:	L.B.P.	Max. Ambient Temp:	43°C
Refrigerant:	R600a	(1) Max. Steady Discharge Temp:	120°C
Operation:	Capillary	(1,2) Max. Peak Discharge Temp:	135°C
Cooling:	Static	Max. Steady Condensing Temp:	60°C
		(2) Max. Peak Condensing Temp:	70°C
		Max. Winding Temp:	130°C
		Max. Impurities:	30 mg
		Max.Total Compressor Water Content:	100 mg

### COMPRESSOR:

Displacement:	4.38 cc	Oil Type:	Mineral
Bore:	18.0 mm	(4) Viscosity:	7 cSt
Stroke:	17.2 mm	Suction Muffler:	Semi-direct
(3) Net Wt:	7.1 kg		
Case Size:	1 (h = 159.5 mm)		
Oil Charge:	160 cc		



### ELECTRICAL:

Power Supply:	220 - 240V	Motor Type:	RSIR / RSCR *
Voltage Limits:	187 - 264V	Locked Rotor Current:	5.1 / 2.9 A**
Frequency:	50 Hz		
Phase:	1 ph		
		Main Winding Resistance at 25°C:	44.5 Ω
		Start Winding Resistance at 25°C:	47.1 Ω

\* With Optional Run Capacitor

\*\* Maximum current / Measured after 4 seconds

(1) Measured 5cm. from the shell with insulated thermocouples

(2) For transient conditions during 'Pull Down'

(3) Net weight is with oil but without electrics

(4) Measured at 40°C

For rated performance,

the suction line must be connected to the stub marked 'AS' on the attached drawing.



### ELECTRICAL COMPONENTS:

ZEM Starting Device:	PTC- 8100	
(1) ZEM Starting Device:	PTC - 7100D2	
ZEM PTC Resistance:	14 Ω	
'Combo' PTC Resistance:	14 Ω	ECC Starting Device: K 100-xx
Run Capacitor:	2.0 μF	

-xx Protector short code

### PROTECTORS:

PROTECTORS	BDG ¾	Wanbao	Electrica ¾
Type	<b>AE 23 BY x</b>	<b>B34 105</b>	<b>T 0647 / kk</b>
Open °C	100 - 110 °C	100 - 110 °C	100 - 110 °C
Close °C	71 - 53 °C	66 - 48 °C	65 - 50 °C
U.T.C	0.80 A 70 °C	0.80 A 70 °C	0.80 A 70 °C
Time Check Current	3.65 A	3.4 A	3.40 A
Max. Current	8.0 A	7.0 A	7.0 A
Code (if any)	F0	M0	C3

Alt. protectors: AF 23 BY x  
D2

*BDG 'x' Codes: 6 for terminal boards Mod.89,90  
8 for terminal board Mod.91*

*Electrica 'kk' Codes: 05 for terminal boards Mod.89,90  
07 for terminal board Mod.91*

*(1) BDG protector AF type is for use with PTC-7100 only.*

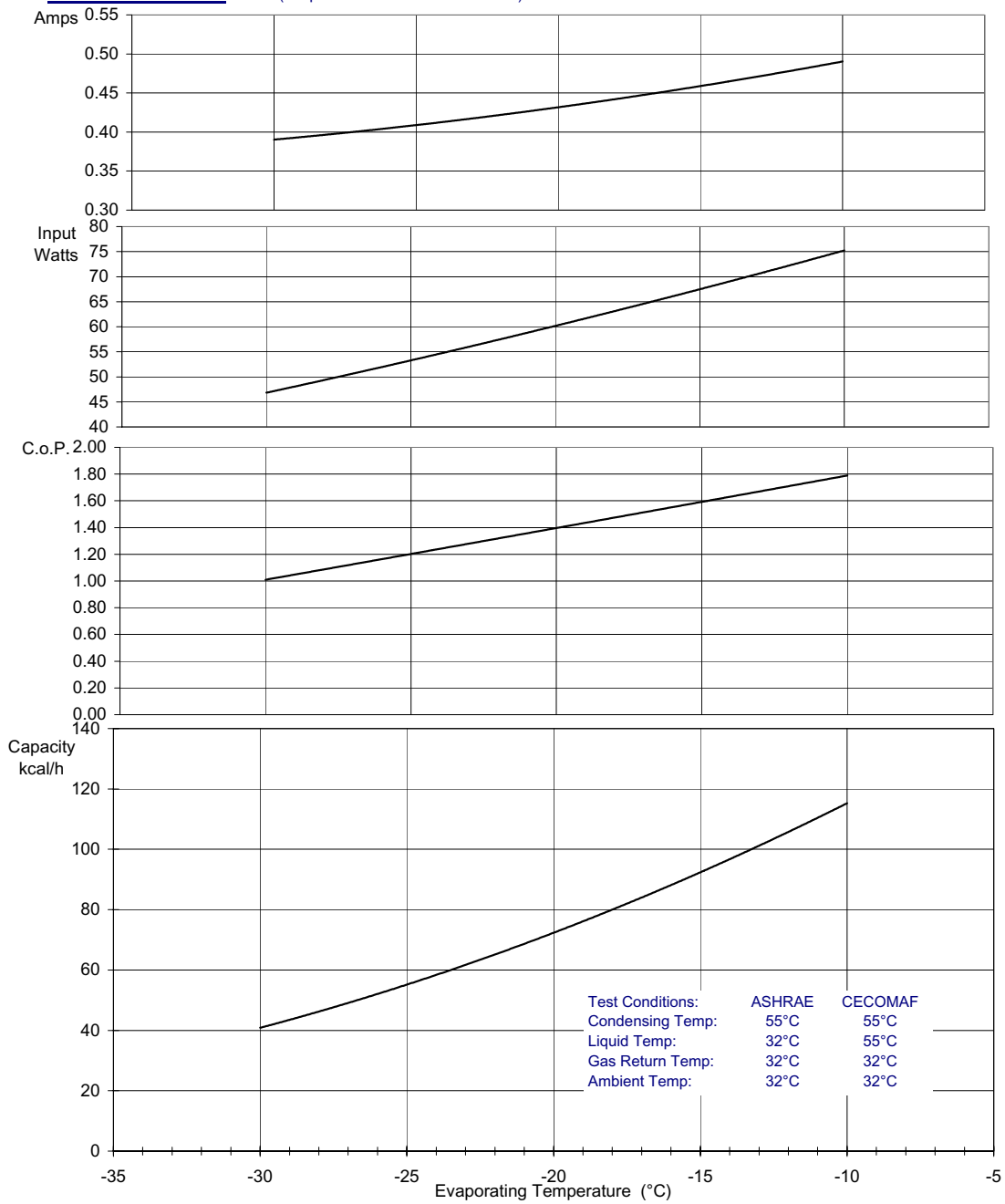


# HVY44AA.02

## PRODUCT SPECIFICATION

### PERFORMANCE: (Graphs are at ASHRAE conditions)

220V 50Hz Without run capacitor



	Evaporating Temperature °C	-30	-25	-23.3	-20	-15	-10	
<b>ASHRAE:</b>	Capacity	Kcal/h	41	55	61	72	93	115
	C.o.P.	W / W	1.01	1.20	1.27	1.40	1.59	1.79
<b>CECOMAF:</b>	Capacity	W	39	53		69	89	110
	C.o.P.	W / W	0.83	1.00		1.15	1.31	1.47
	Input Power	W	47	53	56	60	68	75
	Current	A	0.39	0.41	0.42	0.43	0.46	0.49

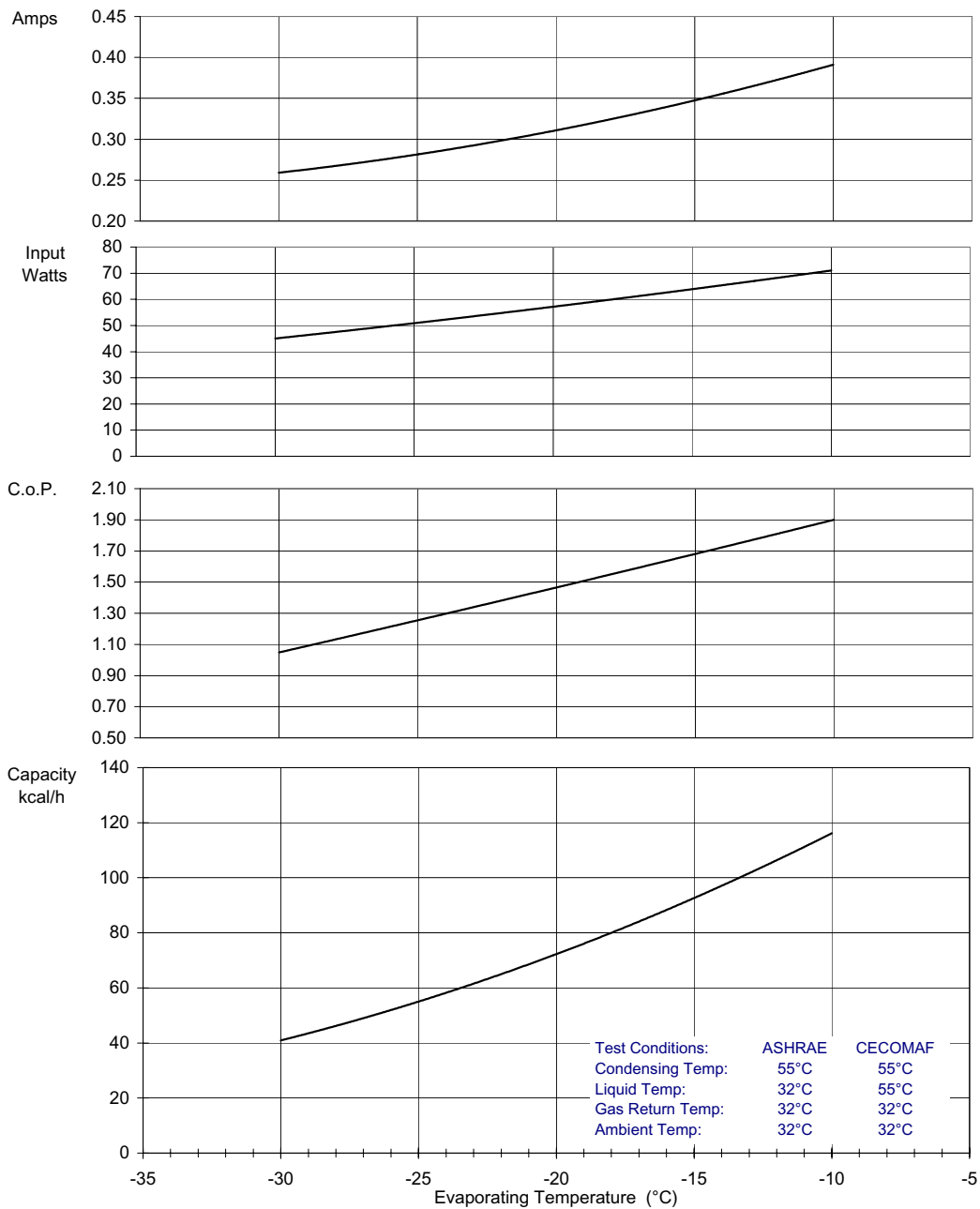


# HVY44AA.02

## PRODUCT SPECIFICATION

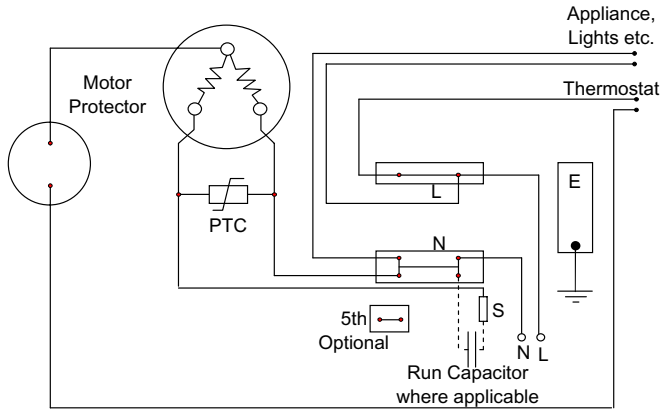
### PERFORMANCE: (Graphs are at ASHRAE conditions)

220V 50Hz With run capacitor

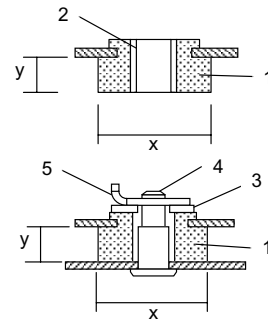


			-30	-25	-23.3	-20	-15	-10
<u>ASHRAE:</u>	Capacity	Kcal/h	41	55	61	72	93	116
	C.o.P.	W / W	1.05	1.25	1.33	1.47	1.68	1.90
<u>CECOMAF:</u>	Capacity	W	39	53		69	89	111
	C.o.P.	W / W	0.87	1.04		1.21	1.39	1.56
	Input Power	W	45	51	53	57	64	71
	Current	A	0.26	0.28	0.29	0.31	0.35	0.39

### Circuit Diagram for ECC Terminal Board Standard Version



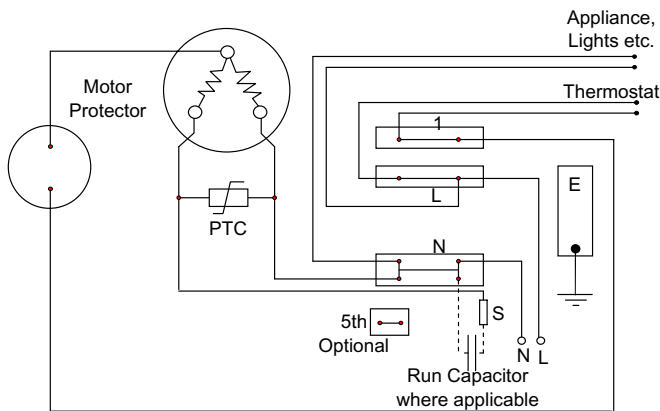
### Mounting Accessories



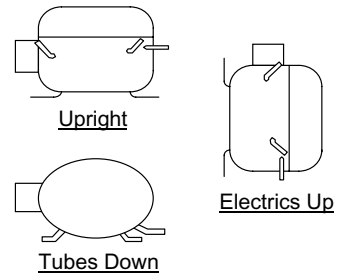
x = 26mm or 28.5mm  
y = 9mm or 10.3mm  
Other sizes available

1. Rubber grommet
2. Sleeve
3. Washer
4. Steel pin
5. Clip

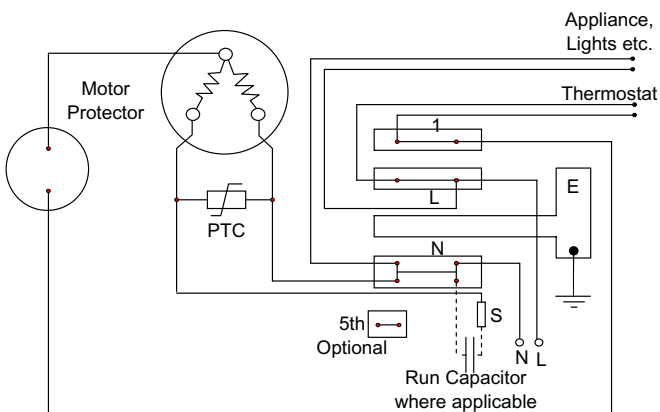
### Circuit Diagram for ECC Terminal Board Frontal Version



### Recommended Transport Positions when fitted into appliances



### Circuit Diagram for ECC Terminal Board Rast 5 Version



### Compressor Label

