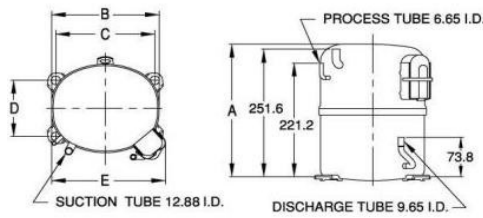


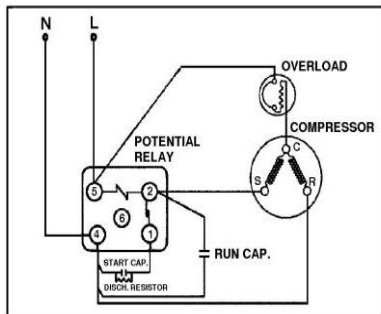


PRINCIPAL DIMENSIONS - mm



| | | | | |
|--------|--------|--------|--------|--------|
| A: 264 | B: 223 | C: 203 | D: 122 | E: 239 |
|--------|--------|--------|--------|--------|

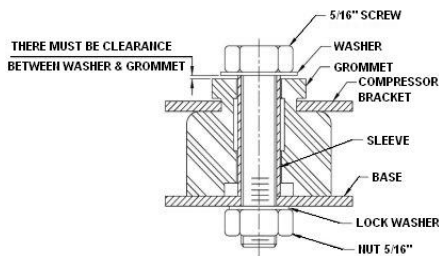
SCHEMATIC WIRING DIAGRAM C.S.R.



High Torque Start

SCHEMATIC WIRING DIAGRAM -

MOUNTING KIT



Electrical : 220-240 V/50 Hz. 1 Phase

Nominal Performance

| | |
|------------------------|------------------------|
| Capacity | 1,114 / - Watts |
| | 3,801 / - BTU/Hr |
| | 958 / - Kcal/Hr |
| Power Input | 865 / - Watts |
| Locked Rotor Amps | 34.00 / - Amps |
| Max Continuous Current | - / - Amps |
| Rated Load Amps | 4.53 / - Amps |
| COP | 1.29 / - Watts / Watts |
| EER | 4.39 / - BTU/W-Hr |

Testing Conditions

| | | |
|-------------------------|---------------|-------------|
| Condensing Temperature | 54.40 °C | 129.9 °F |
| Evaporating Temperature | -23.30 / - °C | -9.9 / - °F |
| Liquid Temperature | 32.20 °C | 90.0 °F |
| Return Gas Temperature | 32.20 °C | 90.0 °F |
| Ambient Temperature | 32.20 °C | 90.0 °F |

Application

| | | |
|--------------------------|----------------|---|
| Evaporating Temp. Range | LBP | @ -35.00 ° C to -10.00 ° C (-31.0° F to 14.0° F) |
| | Heat Pump | - ° C to - ° C (-° F to -° F) |
| Refrigerant | R404A | |
| Refrigerant Flow Control | Capillary Tube | |
| Compressor Cooling | Fan | |

Compressor and Motor data

| | |
|---------------------------------|-------------------------------|
| Compressor Type | Reciprocating |
| Displacement | 26.70 cc. |
| Oil Type | Polyolester Oil |
| Oil Charge | 850 cc. |
| Motor Type | C.S.R. ; 2 Pole 2,880 / - r/m |
| Voltage Range | 198-264/- Volts 50/- Hz. |
| Winding Resistance at 25 ° C | |
| Start | 4.90 Ohms |
| Run | 2.04 Ohms |
| Weight with Oil | 21.66 Kg. |
| Weight with Oil and Accessories | 22.40 Kg. |

Electrical Components

Motor Protector

| | |
|--------------------------|--------------------------------|
| Type | External Overload 3/4" |
| Model Number | KME664-15/C |
| Open / Close | 110-120 / 70-52 ° C |
| 1st Cycle trip at 25 ° C | 27.30 Amps(main) - Amps(start) |

Motor Starter

| | |
|------------------------------|------------------------|
| Type | Potential Relay |
| Model Number | 4043KGE681-3 (RVA3H6D) |
| Pick Up (max.) | 190.00-215.00 Volts |
| Drop Out (min.) | 40.00-105.00 Volts |
| Terminal Cover | KGM 901-1 |
| Start Capacitor | 145-174 µF 330 VAC. |
| Disch Resistor for Start Cap | 15000 Ohms 2 W |
| Run Capacitor | 25 µF 450 VAC. |

Mounting Kit

| | |
|----------------|--------------|
| Rubber Grommet | 4007KGM905-2 |
| Sleeve Grommet | 4023KGM903-2 |
| Washer | - |

Since we are constantly improving our product , the specification are subject to change without notice.

| | |
|-----------|-----------|
| REV. DATE | C / N No. |
| 13-10-17 | 0394/17 |

Certificate Marks

