



Compressor
Voltage Code : T

TFH4524F

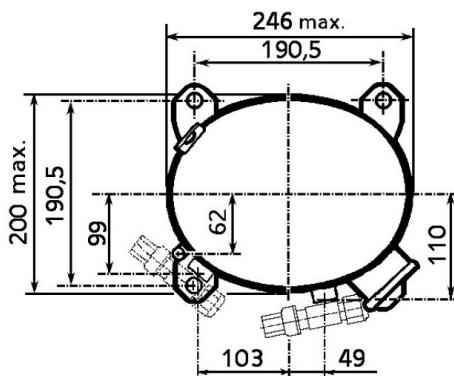
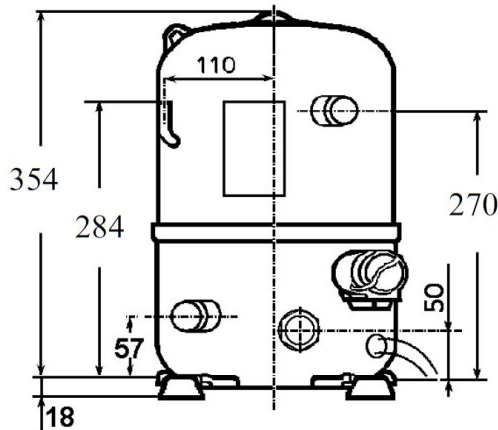
High Temp. Commercial (HP)

400V 3~ 50Hz / 440V 3~ 60 Hz

R22

AHC4524ETZ

Conditions	Frequency	Nominal Cooling Capacity		Sound Power ISO3745 / ISO 3743-1
		Watts	BTU/h	
EN12900 / R22	50 Hz / 60 Hz	5287 / 6232	18030 / 21251	68 dBA



Displacement (cc)	43.5
Net Weight (Kg)	30.0
Oil Quantity (cc)	1330.0
Oil Type	Mineral
Expansion Device	Capillary_Tube/Expansion_Valve
Cooling	Fan
Main Winding (Ohm)	6.5
Current	
RLA (A)	4.1 4.2
MCC (A)	5.9 5.9
LRA (A)	31 32
Electrical Equipment	TRI
Overload	Interne
Refrigerating connection for OD	
Suction Tube	15.9 (5/8")
Discharge Tube	12.7 (1/2")
Process Tube	6.35 (1/4")

* EN12900 : T°Cond. 50.0°C / T°Evap. 5.0°C / T°Return gas temp.. 20.0°C
T°Subcooling. 0.0K

Certificates :

Note : Tecumseh reserves the right to change information contained in this document without notification.



Tecumseh

TFH4524F	Tension T : 400V 3~ 50Hz / 440V 3~ 60 Hz
-----------------	---

Les performances sont données dans les conditions EN12900 :	Gaz aspirés :	20.0 °C
Condition Dew	Sous refroidissement :	0.0 K
The performance data are in EN12900 conditions :	Return gas :	20.0 °C
Dew Condition	Subcooling :	0.0 K

50 Hz R22

N°236EU-T

4 T condensation	5 T évaporation	(°C)	-20	-15	-10	-5	0	5	10	15
40	1 P frigorifique	(Watt)	2012	2545	3240	4091	5095	6246	7539	8969
	2 P absorbée	(W)	1288	1437	1573	1697	1808	1907	1993	2067
	3 I absorbée	(A)	2.83	2.99	3.13	3.26	3.38	3.47	3.55	3.61
50	1 P frigorifique	(Watt)	1576	2044	2654	3401	4281	5287	6416	7660
	2 P absorbée	(W)	1211	1423	1617	1794	1953	2094	2218	2324
	3 I absorbée	(A)	2.67	2.92	3.16	3.37	3.57	3.74	3.90	4.03
60	1 P frigorifique	(Watt)		1512	2048	2702	3468	4340	5314	6383
	2 P absorbée	(W)		1408	1661	1892	2099	2284	2445	2584
	3 I absorbée	(A)		2.86	3.19	3.49	3.76	4.02	4.24	4.44

60 Hz R22

N°236EU-T

4 T condensation	5 T évaporation	(°C)	-20	-15	-10	-5	0	5	10	15
40	1 P frigorifique	(Watt)	2407	3057	3882	4878	6040	7361	8838	10463
	2 P absorbée	(W)	1237	1518	1775	2007	2216	2401	2561	2697
	3 I absorbée	(A)	2.16	2.48	2.76	3.01	3.24	3.43	3.59	3.73
50	1 P frigorifique	(Watt)	1881	2453	3180	4055	5075	6232	7522	8937
	2 P absorbée	(W)	1150	1502	1826	2123	2393	2635	2851	3039
	3 I absorbée	(A)	2.03	2.42	2.78	3.11	3.42	3.70	3.94	4.16
60	1 P frigorifique	(Watt)		1814	2453	3221	4110	5116	6231	7448
	2 P absorbée	(W)		1485	1877	2238	2570	2872	3143	3384
	3 I absorbée	(A)		2.37	2.81	3.22	3.61	3.96	4.29	4.60

1 = cooling capacity 2 = power input 3 = current 4 = condensing temperature 5 = evaporating temperature

Nota : Tecumseh se réserve le droit de modifier les informations contenues dans ce document sans préavis.

Note : Tecumseh reserves the right to change information contained in this document without notification.

© 2018 Tecumseh Products Company
All rights reserved