



大圣纵横[®]
DASHENG ZONGHENG
TOP QUALITY BRAND

DSZH

HVAC/R TOOLS AND VACUUM PUMPS SPECIALIST

制冷工具和真空泵专家

金华市威科工贸有限公司
JINHUA WEIKE INDUSTRIAL & TRADING CO.,LTD.

地址：金华市金东区岭下镇工业区松溪路33号
Add: NO.33 Songxi Road,Lingxia Industry Zone,
Jindong District,Jinhua,Zhejiang Province,China
电话/Tel: 0579-82832878 82832879 82832988
传真/Fax: 0579-82832886
网址/Http: www.cnzongheng.com
邮件/E-mail: dobest@cnzongheng.com



公众号
public number



官网
official website

2020

企业简介 ABOUT US

金华市威科工贸有限公司坐落于浙江省金华市，是一家集科研开发、自主创新、生产、销售为一体的现代化科技型企业。公司一直致力于制造高品质的制冷工具，加注秤、冷媒表组、冷媒回收机及真空泵。公司拥有多项国家发明专利及五十多项新型专利，并率先在行业内通过“ISO90001:2000质量管理体系”、欧洲CE等认证。公司占地面积62亩，标准化生产厂区42000余平方米，拥有现代化的生产线以及加工设备，员工200余人，技术骨干30余人。公司产品深受国内外新老客户的欢迎，目前已销售到全球七十余个国家和地区，成为全球制冷工具行业知名品牌。

公司先后被科技部、浙江省科技厅及市人民政府评为：“国家高新企业”、“浙江省科技型企业”和“金华市高新科技企业”。产品屡次荣获：“浙江省省级工业新产品（新技术）”、“金华市著名商标”、“科技项目二等奖”、“结构创新二等奖”。公司的技术研发能力出类拔萃，产品得到广泛认可。“大圣纵横”商标被业界权威机构评为：“明星品牌”“五金名品”“领先品牌”和“最受市场欢迎品牌”等多项殊荣。

大圣纵横，纵横国际！公司以发展成全球“高品质、高性价比”制冷工具及真空泵的标志为企业目标，秉承以人为本，质量第一的管理理念，锐意进取，勇于创新，致力于打造中国最现代化和最具规模的制冷工具行业生产专业企业。



JINHUA WEIKE INDUSTRIAL & TRADING CO.,LTD is located in Jinhua City,Zhejiang,China.It is a modern science and technology enterprise integrating scientific research, development, independent innovation, production and sales.Our company has been committed to manufacturing top quality refrigeration tools, charging scales, manifolds, recovery machines and vacuum pumps. With a number of National Invention Patents and more than fifty Utility Model Patents,JINHUA WEIKE has taken the lead to pass ISO9001:2000,CE,etc.quality management systems in the refrigeration tool industry.The company covers an area of 62 acres and has a standardized manufacture area of 42,000 square meters in which there are modern production lines and processing equipment,employ more than 200 employees and 30 technical backbones. DSZH products,which are popular by new and old customers at home and abroad,had been sold to more than 70 countries and regions around the world.DSZH brand also becomes a well-known brand in the global refrigeration tool industry.

JINHUA WEIKE has been rated as "National High-tech Enterprise", "Zhejiang Science and Technology Enterprise" and "Jinhua High-tech Enterprise" by the Ministry of Science and Technology, Zhejiang Science and Technology Department and Municipal People's Government. DSZH products have been awarded with "Zhejiang Provincial Industrial New Products (New Technology)", "Jinhua City Famous Trademark", "Technology Project Second Prize" and "Structural Innovation Second Prize". The company's technology research and development capabilities are outstanding and its products are widely recognized. The trademark "DSZH"was awarded by the industry authorities as"Star Brand", "Hardware Famous Brand", "Leading Brand" and "Most Popular Brand In The Market" and so on. DSZH,brilliant around the world! We aim to develop it into a global "high-quality, cost-effective" refrigeration tools and vacuum pumps iconic enterprise.With adhering to the people-oriented and quality-first management philosophy, keeping forging ahead, being innovative, we are committed to building the most modern and largest professional manufacturing enterprise in Chinese refrigeration tool industry area.





企业荣誉 ENTERPRISE HONOR



精尖的生产设备 超前的管理模式

公司拥有具备多年实际操作经验的工人与技术人员，以严谨而务实的作风，掌控着企业重要的生产与品质保证流程；与员工不断积累的经验与能力同步，在设备上的投资也不遗余力，各类尖端设备的引进，从制作环节上确立的领先优势。



目录 CONTENTS

	偏心扩管器 Eccentric Cone Flaring Tool 电动扩管器 Cordless & Electric Flaring Tool	P01-05
	T型拉孔器 Tee-Extractor Sets 扩口胀管器 Flaring & Swaging Tool	P06-08
	管子割刀 Tube Cutter 轴承式割刀 Roller Type Tube Cutter	P09-10
	其它工具 Other HVAC/R Tools 胀管器 Tube Expander Tools	P11-17
	弯管器套装 Tube Bender Kit 弯管器 Tube Bender	P18-21
	检漏仪 Leak Detector 加注秤 Charging Scale	P22-26
	真空计 Vacuum Meter 数显表 Digital Manifolds	P27-30
	加液管 Charging Hose 冷媒表组 Manifolds Gauge	P31-35
	快速接头 Quick Couplers 手提工具箱 Portable Box Set	P36-37
	真空泵 Vacuum Pumps	P38-47
	冷媒回收机 Recovery Unit	P48-49

WK-R806A ▶

45° 棘轮式偏心扩管器
45° Ratchet Eccentric Cone Type Flaring Tool

专利产品 PATENTED

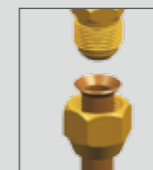


扩口精准 工艺精湛

ACCURATE FLARING EXQUISITE WORKMANSHIP



Ball position simple and convenient operation
钢珠定位 操作简单方便



Precision flared no leakage connect
精准扩孔 接管不漏气



Double ring bars permanent leveling malposition
双环方钢夹板 平整不错位



Arc flame ergonomics design
圆弧龙门架 人体工学设计



Ratchet fast forward portable suitable to use in narrow space
棘轮快速进给 轻便 适合在狭小空间内使用

	型号 Item No.	品名规格 Description
	WK-R806A	For inch: 1/4", 5/16", 3/8", 1/2", 5/8" & 3/4" O.D. Tubing individual packed in color box. (单只彩盒包装)
	WK-R806M	For metric: 6mm, 9mm, 10mm, 12mm, 16mm & 19mm O.D. Tubing individual packed in color box. (单只彩盒包装)
	WK-R808A	For inch: 3/16", 1/4", 5/16", 3/8", 1/2", 5/8" & 3/4" O.D. Tubing individual packed in color box. (单只彩盒包装)
	WK-R808M	For metric: 5mm, 6mm, 9mm, 10mm, 12mm, 16mm & 19mm O.D. Tubing individual packed in color box. (单只彩盒包装)
	WK-R806FT-L	WK-R806+WK-532+CT-207 1/4", 5/16", 3/8", 1/2", 5/8", 3/4" & 6mm, 9mm, 10mm, 12mm, 16mm, 19mm O.D. Tubing Packed in hand carrying plastic case. (吹塑手提箱包装)
	WK-R808FT-L	WK-R808+WK-532+CT-207 3/16", 1/4", 5/16", 3/8", 1/2", 5/8", 3/4" & 5mm, 6mm, 9mm, 10mm, 12mm, 16mm, 19mm O.D. Tubing Packed in hand carrying plastic case. (吹塑手提箱包装)

WK-806A ▶

精准型偏心扩管器

Accuracy Eccentric Cone Flaring Tool

专利产品 PATENTED



WK-519FT ▶

45° 一体式偏心扩孔器

45° Eccentric Cone Type Flaring Tool

专利产品 PATENTED



扩口精准 工艺精湛

ACCURATE FLARING EXQUISITE WORKMANSHIP



Ball position simple and convenient operation
钢珠定位 操作简单方便



Precision flared no leakage connect
精准扩孔 接管不漏气



Double ring bars permanent leveling malposition
双环方钢夹板 平整不错位



Arc flame ergonomics design
圆弧龙门架 人体工学设计

超级精准 快捷方便

SUPER ACCURACY FAST & CONVENIENT



夹管模(支持定制)
Liners(Customizable)



限位挡片
Stopper Plate



统一扩口尺寸
Uniform Flares In Size



轻松夹管
Easy Clamp

型号 Item No.	品名规格 Description
WK-806A	For inch:1/4",5/16",3/8",1/2",5/8" & 3/4"O.D.Tubing individual packed in color box. (单只彩盒包装)
WK-806M	For metric:6mm,9mm,10mm,12mm,16mm & 19mm O.D.Tubing individual packed in color box. (单只彩盒包装)
WK-808A	For inch:3/16",1/4",5/16",3/8",1/2",5/8" & 3/4"O.D.Tubing individual packed in color box. (单只彩盒包装)
WK-808M	For metric:5mm,6mm,9mm,10mm,12mm,16mm & 19mm O.D.Tubing individual packed in color box. (单只彩盒包装)
WK-809AM	For inch and metric:6mm,1/4",9mm,3/8",10mm,12mm,1/2",5/8"(16mm) & 3/4"(19mm) O.D.Tubing individual packed in color box. (单只彩盒包装)
WK-806AM-L	WK-806+CT-207 1/4",5/16",3/8",1/2",5/8" & 3/4" O.D.Tubing (6mm,9mm,10mm,12mm,16mm & 19mm O.D.Tubing) packed in hand carrying plastic case. (吹塑手提箱包装)
WK-808AM-L	WK-808+CT-207 3/16",1/4",5/16",3/8",1/2",5/8" & 3/4" O.D.Tubing (5mm,6mm,9mm,10mm,12mm,16mm & 19mm O.D.Tubing) packed in hand carrying plastic case. (吹塑手提箱包装)
WK-806FT-L	WK-806+WK-532+CT-207 1/4",5/16",3/8",1/2",5/8" & 3/4" & 6mm,9mm,10mm,12mm,16mm,19mm O.D.Tubing packed in hand carrying plastic case. (吹塑手提箱包装)
WK-808FT-L	WK-808+WK-532+CT-207 3/16",1/4",5/16",3/8",1/2",5/8",3/4" & 5mm,6mm,9mm,10mm,12mm,16mm,19mm O.D.Tubing packed in hand carrying plastic case. (吹塑手提箱包装)
WK-805FT-L	WK-805+WK-532+CT-207 1/2",5/8",3/4",7/8",1" & 12mm,16mm,19mm,22mm,25mm O.D.Tubing packed in hand carrying plastic case. (吹塑手提箱包装)

产品技术参数 Technical Parameter

型号 Item No.	品名	规格 Description
WK-519FT-L	WK-519FT+WK-532+CT-207	For inch and metric: 1/4",6mm,5/16"(8mm), 3/8",10mm,1/2",12mm,5/8"(16mm), 3/4"(19mm) O.D.Tubing Packed in hand carrying plastic case. (吹塑手提箱包装)


WK-E806AM-L ▶

充电式电动扩孔器

Electric Cordless Flaring Tool



产品技术参数 Technical Parameter

品名	规格 Description
 WK-E806AM+WK-532 +CT-207+Spare battery+Charger(18V) +2 Steel bar	For inch: 1/4", 5/16", 3/8", 1/2", 5/8" & 3/4" O.D. Tubing For metric: 6mm, 9mm, 10mm, 12mm, 16mm & 19mm O.D. Tubing Packed in hand carrying plastic case. (吹塑手提箱包装)

特快精准 经久耐用

SUPER FAST & ACCURATE SUPER DURABLE

充电式电动扩孔器套装

Electric Cordless Flaring Tool

专利产品 PATENTED

◀ WK-E900

电动胀管扩口器

Electric Expander & Flaring Tool

专利产品 PATENTED



超级精准 快捷方便

SUPER ACCURACY FAST & CONVENIENT



扩口头和胀管头
Flare And Expander Heads



电动扩管
Electric Flare



电动胀管
Electric Expander



标准胀管和扩口
Accurate Flaring & Expanding

◀ WK-E800AM-L

产品技术参数 Technical Parameter

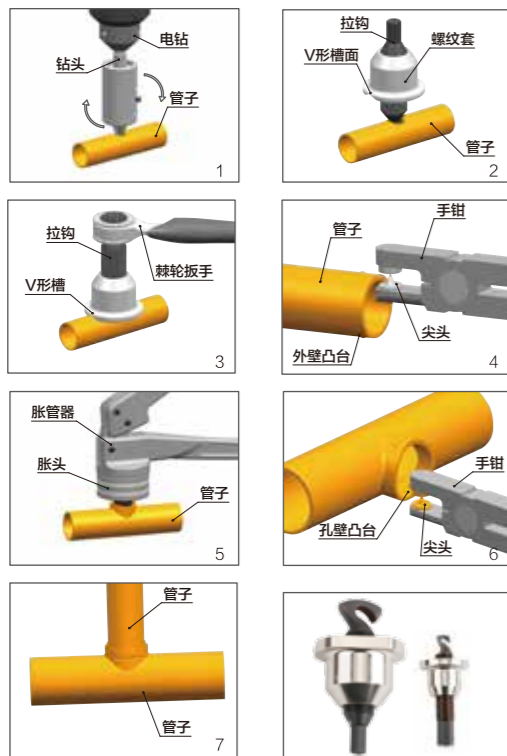
品名	规格 Description
WK-E800AM+WK-532 +CT-207+2 Clamp heads+Charger(18V) +7 Steel bar	For inch and metric: 6mm, 1/4", 5/16"(8mm), 3/8", 10mm, 12mm, 1/2", 5/8"(16mm) & 3/4"(19mm) O.D. Tubing packed in hand carrying plastic case. (吹塑手提箱包装)
	<p>Clamps Head</p> 

产品技术参数 Technical Parameter

型号 Item No.	品名规格 Description
WK-E900	扩管 Flare: 1/4", 3/8", 1/2", 5/8", 3/4" in carrying case. (吹塑盒包装)
	胀管 Expand: 1/4", 3/8", 1/2", 5/8", 3/4", 7/8" in carrying case. (吹塑盒包装)

WK-T800

T型拉孔器 Tee-Extractor Sets



拉钩尺寸 Extractor Heads Size								
10mm	12mm	16mm	19mm	22mm	25mm	28mm	32mm	
3/8"	1/2"	5/8"	3/4"	7/8"	1"	1-1/8"	1-1/4"	

45° 偏心式扩管器

45° Eccentric Cone Type Flaring Tools

型号 Item No.	品名规格 Description
WK-813	WK-R806AM 扩管器 WK-274 割刀 CT-209 倒角器 CT-207 倒角刀 CT-96 胀针 CT-102 精品弹簧弯管器 CT-122 棘轮扳手 + 手提箱 WK-R806AM Flaring Tool; WK-274 Tube Cutter; CT-209 Reamer; CT-207 Deburrer; CT-96 Swaging Punch; CT-102 Spring Bender CT-122 Ratchet Wrench
CT-806A	For inch: 1/4", 5/16", 3/8", 1/2", 5/8" & 3/4" O.D. Tubing
CT-806M	For metric: 6mm, 9mm, 10mm, 12mm, 16mm & 19mm O.D. Tubing
CT-808A	For inch: 3/16", 1/4", 5/16", 3/8", 1/2", 5/8" & 3/4" O.D. Tubing
CT-808M	For metric: 5mm, 6mm, 9mm, 10mm, 12mm, 16mm & 19mm O.D. Tubing
CT-806AM-L	CT-806+WK-274 +CT-208 1/4", 5/16", 3/8", 1/2", 5/8", 3/4" & 6mm, 9mm, 10mm, 12mm, 16mm, 19mm O.D. Tubing Packed in hand carrying plastic case. (吹塑手提箱包装)
CT-808AM-L	CT-808+WK-274 +CT-208 3/16", 1/4", 5/16", 3/8", 1/2", 5/8", 3/4" & 5mm, 6mm, 9mm, 10mm, 12mm, 16mm, 19mm O.D. Tubing Packed in hand carrying plastic case. (吹塑手提箱包装)



CT-275/CT-2000

45° 精品胀管扩孔套装

45° Flaring & Swaging Tool Kit

CT-275

Flares 1/8", 3/16", 1/4", 5/16", 3/8", 7/16", 1/2", 5/8" & 3/4" O.D. Includes 5 swage adapters that swage 7 tube sizes 3/16", 1/4", 5/16", 3/8", 1/2", 5/8", 3/4" O.D.

CT-2000

For 3/16", 1/4", 5/16", 3/8", 7/16", 1/2" & 5/8" O.D. Includes 6mm, 8mm, 10mm, 12mm, 16mm & 19mm O.D. Packed in hand carrying plastic case.

45° 精品胀管扩孔套装

45° Flaring & Swaging Tool Kit

CT-275

CT-274

Tube Cutter 1/8" ~ 1-1/8" (3-28mm)

CT-122

Ratchet Wrench for 1/4", 3/8", 3/16", 5/16"
Packed in hand carrying plastic case.



CT-278



CT-1226-AL

45° 精品扩管器+割刀套装

45° Flaring & Cutter Tool Kit

CT-195 Flaring Tool

CT-274 Tube Cutter

Packed in hand carrying plastic case.

45° 双层式扩管器工具组

45° Double Flaring Tool Kits

CT-96FB

Flares 3/16", 1/4", 5/16", 3/8", 7/16", 1/2", 5/8" & 6mm, 8mm, 10mm, 12mm, 16mm, 19mm O.D. Tubing. Includes 7 double flaring adapters which cover 3/16", 1/4", 5/16", 3/8", 7/16", 1/2" & 5/8" O.D. Tubing
Packed in hand carrying plastic case.



CT-96FB

CT-526-F

万能扩管器

DSZH Grabber Flaring Tool

For 3/16" to 3/4" & 5mm to 19mm O.D.



CT-525-F

For 3/16" to 5/8" & 5mm to 16mm O.D.

CT-500 CT-505

活块扩孔器

Blocks Type Flaring Tool

For 3/16", 1/4", 5/16", 3/8", 1/2" & 5/8" O.D.

For 3/16", 1/4", 5/16", 3/8", 1/2", 5/8" & 3/4" O.D.



CT-195

45° 扩孔器

45° Flaring Tool

For 3/16", 1/4", 5/16", 3/8", 7/16", 1/2" & 5/8" O.D.



CT-203

For 5/8", 3/4", 7/8", & 1-1/8" O.D.



WK-670



WK-650



WK-532



WK-428



WK-319

- ★ Ball bearings make the difference!
- ★ Great Cuts with the greatest of ease!
- ★ High-quality radial ball bearings enable DSZH tube cutters to cut with less effort than any previous models.

- ★ 合金钢刀片：锋利耐用
- ★ 滚珠轴承：灵活精准
- ★ 铝合金刀体：轻便省力

轴承式割刀

DSZH ROLLER TYPE TUBE CUTTER



滚珠轴承刀片
BEARING BLADE



轴承滚轮
BEARING ROLLER



轻松割管 统一圈内切割
EASY CUT IN A CIRCLE

产品技术参数 Technical Parameter

型号 Item No.	品名规格 Description	材质 Material
WK-319	Roller Type Tube Cutter 轴承式割刀	For Φ 1/8" to 3/4" (3-19mm)
WK-428		For Φ 3/16" to 1-1/8" (4-28mm)
WK-532		For Φ 3/16" to 1-1/4" (5-32mm)
WK-650		For Φ 1/4" to 2" (6-50mm)
WK-670		For Φ 1/4" to 2-3/4" (6-70mm)
WK-319B	Cutting Blade 割刀刀片	For WK-319
WK-428B		For WK-428
WK-532B/650B		For WK-532/650
WK-670B		For WK-670
		Zinc alloy body 锌合金刀体
		Aluminum alloy body 铝合金刀体
		Alloy steel blade 合金钢刀片

管子割刀

DSZH TUBE CUTTER



WK-127

For Φ 1/8" to 5/8" (3~16mm)



WK-128

For Φ 1/8" to 7/8" (3~22mm)



Packing



WK-206

For 10~66mm (3/8" to 2~5/8") O.D.tubing



WK-274/312

For Φ 1/8" to 1-1/8"

For Φ 1/4" to 1-5/8"



CT-127

For Φ 1/8" to 5/8"



CT-174

For Φ 1/8" to 1-1/8"



CT-105/107

For Φ 1/8" to 1-3/8"
For Φ 1/4" to 2"



CT-204 A型封口器

Pinch-off Tool

In extra strong execution to pinch off suction tubes on all hermetic refrigeration systems up to 3/8" diameter.



WK-201 B型封口器

7" Pinch off plier

Pinch of copper tubing up to 5/16" (8mm) instantly.



CT-208 内外绞刀

Inner-outer Reamer

Plastic body, 3/16" ~ 1-1/2" O.D.tubing. Reams Both Inside and Outside Edges of Tubing.



CT-209 内外绞刀

Inner-outer Reamer

Zinc body, 1/4" ~ 1-5/8" O.D.tubing. Reams Both Inside and Outside Edges of Tubing.



CT-351 塑料翅片梳

Fin Straightener

For 8,9,12,14,15 Spacings per inch. 适用于各种尺寸的翅梳。



CT-352 不锈钢散热刷

Fin Straightener

Fin straightener stainless steel. Cleaning & straightening evaporator fin.



CT-122 棘轮扳手

Ratchet Wrench

4 Sizes: 1/4", 3/8", 3/16" 5/16" square ratchet.



CT-123L 棘轮扳手

Ratchet Wrench

4 Sizes: 1/4", 3/8" square, 9/16", 1/2" hex ratchet.



PTC-01 毛细管剪刀

Capillary Tube Cutter

Cuts all sizes of capillary tubes without collapsing nor swaging the tubes.



WK-207 转动倒角刀

Deburrer

Handy deburrer, Blade can be swivelled. 用于管道和板材边缘去毛刺，小巧轻便，刀片可按材料轮廓旋转。



环型口袋镜

Inspect Mirror

Mirror O.D. 视镜直径 32mm 50mm
Length closed 回缩长度 127mm 200mm
Length open 拉伸长度 500mm 410mm
Diameter 杆子直径 8mm 10mm



CT-503 捡拾工具

Pick Up Tools

Length closed: 126mm
Length open: 637mm
伸缩长度: 126-637毫米

多功能毛细管剪刀 Capillary Tube Cutter

夹子钳
适用于0.1-1.5mm的毛细管
适用于1.5-2.5mm的毛细管
适用于2.5-3.0mm的毛细管

多功能毛细管剪刀
带有夹子钳功能
可切割所有的毛细管
切断后管口平滑不变形

Clamp pliers
Cuts 0.1 ~ 1.5mm
Cuts 1.5 ~ 2.5mm
Cuts 2.5 ~ 3.0mm diameters of capillary tubes

Capillary Tube Cutter
Cuts all sizes of capillary tubes without collapsing nor swaging the tubes.



PTC-02

胀管棒 Swaging Punch Tools



CT-94

For 1/2", 5/8" & 7/8" O.D.Tubing

CT-95

For 1/4", 5/16", 3/8", 1/2" & 5/8" O.D.Tubing

CT-96

For 1/4", 5/16", 3/8", 1/2", 5/8" & 3/4" O.D.Tubing

CT-193

For 1/4", 5/16", 3/8", 1/2" & 5/8" O.D.Tubing

弯管弹簧 Bender Spring



CT-102

CT-102-L For Inch: 1/4", 5/16", 3/8", 1/2" & 5/8" size O.D.Tubing
CT-102-04 For Inch: 1/4" O.D.Tubing
CT-102-06 For Inch: 3/8" O.D.Tubing
CT-102-08 For Inch: 1/2" O.D.Tubing
CT-102-10 For Inch: 5/8" O.D.Tubing
CT-102-12 For Inch: 3/4" O.D.Tubing



WK-202

WK-202-04 For Inch: 1/4" O.D.Tubing
WK-202-06 For Inch: 3/8" O.D.Tubing
WK-202-08 For Inch: 1/2" O.D.Tubing
WK-202-10 For Inch: 5/8" O.D.Tubing
WK-202-12 For Inch: 3/4" O.D.Tubing

WK-01 ▶

拆装空调机专用扳手

Air Conditioner Installation Spanner

专利产品 PATENTED



强磁吸力 STRONG MAGNET
可更换空调外机机脚螺丝 14MM/17MM
USE FOR 14MM & 17MM UNITS

使用说明 Operation Guide



Put screw in spanner
强磁吸住螺丝



Easy installation
轻松拆装



Very dangerous
非常危险

WK-030 ▶

自动点火杆焊焊枪

Automatic Ignition Gas Torch



WK-1S



WK-1



WK-1D1



WK-3SW

WK-622 ▶

手动胀管器

Tube Expander

专利产品 PATENTED



用于 Us for:
6mm,8mm,9mm,10mm,12mm,
16mm,19mm,22mm,1/4",5/16",
3/8",1/2",5/8",3/4",7/8" O.D. Tubing

精准胀管 经久耐用

ACCURACY EXPANDING SUPER DURABLE

使用说明 Operation Guide



WK-96 ▶

胀管棒

Swaging Punch



用于 Us for:

1/4",5/16",3/8",1/2",5/8",3/4" O.D. Tubing





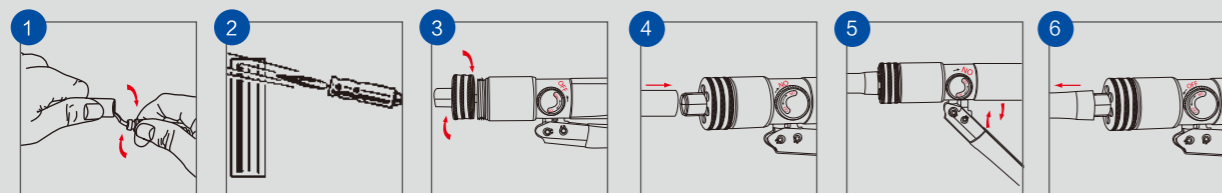
CT-300

手动液压胀管器

Hydraulic Tube Expander

专利产品 PATENTED

操作示意图 Operation Guide



SIX EASY STEPS:

- ★ Deburr inside of tube.
- ★ Anneal the tube if necessary (for hard or thickwall tube).
- ★ Screw the expander head on expander.
- ★ Put the end of tube on expander head.
- ★ Tighten the relief valve knob to 'ON' position then pump handle until tube is expanded to the end.
- ★ Turn the relief valve knob to 'OFF' position to loosen expander head. remove expanded tube.

简单操作六步骤:

- ★ 除去管内毛刺
- ★ 如果有必要，给管子退火(用于硬管或者厚管)。
- ★ 将胀头旋到胀管器上
- ★ 将管子末端放到胀头上
- ★ 将减压阀旋钮向 'ON' 方向并扭紧，然后反复压动手柄直到管子完全胀开。
- ★ 将减压阀旋钮旋至 'OFF' 位置松开胀头，取下胀好的管子。



产品技术参数 Technical Parameter

型号 Item No.	品名规格 Description		
CT-300A	Normal	CT-300A+WK-532+CT-209	For inch: 3/8", 1/2", 5/8", 3/4", 7/8", 1", 1-1/8" O.D. Tubing
CT-300M	Normal	CT-300M+WK-532+CT-209	For metric: 10mm, 12mm, 16mm, 19mm, 22mm, 25mm, 28mm O.D. Tubing
CT-300AL	New	CT-300A+WK-650+CT-209 +WK-207+CT-300PL	For inch: 3/8", 1/2", 5/8", 3/4", 7/8", 1", 1-1/8", 1-1/4", 1-3/8", 1-1/2", 1-5/8" O.D. Tubing
CT-300ML	New	CT-300M+WK-650+CT-209 +WK-207+CT-300PL	For metric: 10mm, 12mm, 16mm, 19mm, 22mm, 25mm, 28mm, 32mm, 35mm, 38mm, 42mm O.D. Tubing

新型自动定心式胀头 NEW Expander Heads



新型备用胀头 NEW Spare Expander Heads

Inch	英制	Metric	公制
N100A-01	For inch: 3/8"	N100M-01	For metric: 10mm
N100A-02	For inch: 1/2"	N100M-02	For metric: 12mm
N100A-03	For inch: 5/8"	N100M-03	For metric: 16mm
N100A-04	For inch: 3/4"	N100M-04	For metric: 19mm
N100A-05	For inch: 7/8"	N100M-05	For metric: 22mm
N100A-06	For inch: 1"	N100M-06	For metric: 25mm
N100A-07	For inch: 1-1/8"	N100M-07	For metric: 28mm
N100A-08	For inch: 1-1/4"	N100M-08	For metric: 32mm
N100A-09	For inch: 1-3/8"	N100M-09	For metric: 35mm
N100A-10	For inch: 1-1/2"	N100M-10	For metric: 38mm
N100A-11	For inch: 1-5/8"	N100M-11	For metric: 42mm
N100A-12	For inch: 1-3/4"	N100M-45mm	For metric: 45mm
N100A-13	For inch: 2"	N100M-50mm	For metric: 50mm
N100A-14	For inch: 2-1/8"	N100M-54mm	For metric: 54mm
N100A-1/4"	For inch: 1/4"	N100M-6mm	For metric: 6mm
N100A-5/16"	For inch: 5/16"	N100M-8mm	For metric: 8mm

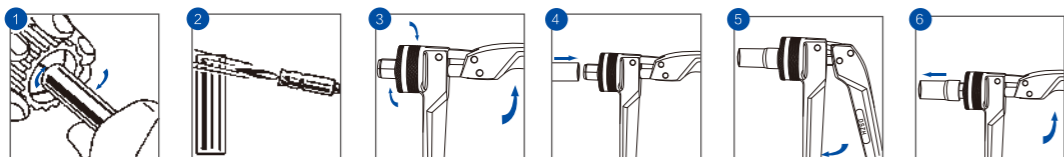


CT-100

杠杆胀管器工具箱
Lever Tube Expanding Tool Kit

杠杆胀管 方便快捷

LEVER EXPANDED FAST & CONVENIENT



SIX EASY STEPS:

- ★ Debur inside of tube.
- ★ To create perfectly expanded tubing for soldering or brazing, you must use soft copper or fully anneal end of tube to be expanded.
- ★ Pull expander handle up to 90-degree position. Maintain this position as you screw the appropriate size head over the center-punch and tighten.
- ★ Insert the end of the tube over the expander head completely.
- ★ Pull the lever completely down.
- ★ Return the lever to the 90 degree position. Remove expanded tube.

简单的六步操作:

- ★ 去除管子内毛刺。
- ★ 被胀的管子必须是软管或者被退过火的管子。
- ★ 将胀管器手柄拉到90度的位置，保持住这个位置然后旋转适当尺寸的胀头到胀针上并旋紧。
- ★ 将管子末端完全插到胀头上。
- ★ 将杠杆向下推到底。
- ★ 把杠杆拉回到90度位置，拿掉胀好的管子。



产品技术参数 Technical Parameter

型号 Item No.	品名规格 Description		
CT-100AL	New	CT-100A+WK-650+CT-207	For inch: 3/8", 1/2", 5/8", 3/4", 7/8", 1", 1-1/8", 1-1/4", 1-3/8", 1-1/2", 1-5/8" O.D. Tubing
CT-100ML	New	CT-100M+WK-650+CT-207	For metric: 10mm, 12mm, 16mm, 19mm, 22mm, 25mm, 28mm, 32mm, 35mm, 38mm, 42mm O.D. Tubing
CT-100A	Normal	CT-100A+WK-532+CT-207	For inch: 3/8", 1/2", 5/8", 3/4", 7/8", 1", 1-1/8" O.D. Tubing
CT-100M	Normal	CT-100M+WK-532+CT-207	For metric: 10mm, 12mm, 16mm, 19mm, 22mm, 25mm, 28mm O.D. Tubing

WK-700

手动液压软管压接器
Hydraulic Hose Compressing Tools



专利产品 PATENTED

产品技术参数 Technical Parameter

型号 Item No.	品名规格 Description	
WK-700	WK-700+7 Pcs includes tablet compressing	#6, #8, #10, #12, #6SRB, #8SRB, #10SRB, #12SRB O.D. Tubing Packed in hand carrying plastic case. (吹塑手提箱包装)



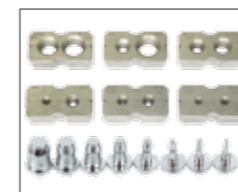
压力压管 方便快捷

HEAVY DUTY COMPRESSING TOOLS
FAST & CONVENIENT

WK-400

液压扩管胀管工具
Hydraulic Expander & Flaring Tools

强力胀管 & 扩口
HEAVY DUTY
EXPANDING & FLARING



夹管模和胀头
Liners And Expander



液压胀管
Hydraulic Expander



液压扩管
Hydraulic Flare



标准胀管和扩口
Accurate Flaring & Expanding

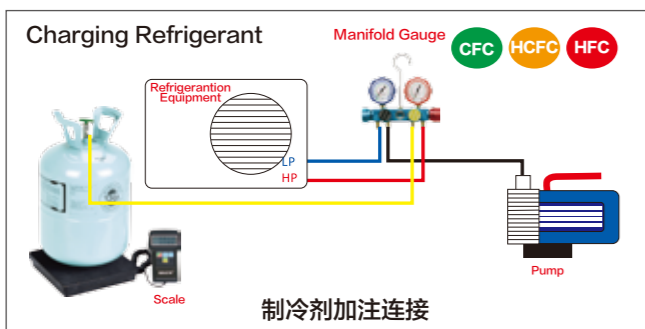
产品技术参数 Technical Parameter

型号 Item No.	品名规格 Description	
WK-400AM-L	WK-400+WK-532 +CT-207+8 Pcs includes swage adapters +6 Pcs steel bar	3/16", 1/4", 6mm, 5/16", 3/8", 10mm, 1/2", 12mm, 5/8", 3/4", 7/8", 22mm O.D. Tubing Packed in hand carrying plastic case. (吹塑手提箱包装)

RCS-7040 ▶

普通冷媒计重秤

Electronic Refrigerant Charging Scale



WK-VG89 ▶

数显可编辑真空计 Digital Vacuum Meter

LCD大屏
LCD Screen

开/关
ON/OFF

单位切换
Units

背光灯
Background Light

高精传感器
High Accuracy Sensor



特点:

1. 精准监测系统真空度。
2. 检测真空泵气密性。
3. 校准智能真空泵的真空计。

FEATURE:

1. Monitor system vacuum.
2. Monitor vacuum pump air impermeability.
3. Calibrate vacuum gauge on intelligent pump.

ITEM	WK-VG89
量程 Range	1ATM(approximately100000Pa)~0.1Pa,750000~0.75Micron
测量精度 Accuracy	0.1Pa~1000Pa;Reading ± 5%(at20℃)
分辨率 Resolution	0.1Pa(<10Pa);1Pa(<100Pa);10Pa(<1000Pa)
单位选择 Unit	Pa,mBar,mmHg,mTorr,InHg,Microns
电源 Battery life	40 hours(4 × AA battery)
最大过载压力 Maximum overload pressure	0.5MPa/72PSI
操作温度 Operating temperature	-5~50℃(-23~122F)
蜂鸣器 Buzzer alarm	90分贝音量, 10S后关闭(90db,shut down after 10 seconds)

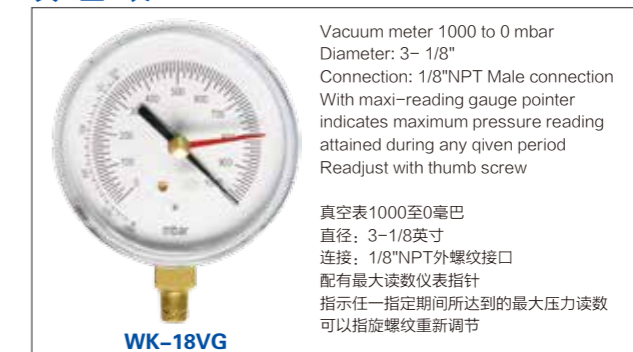
NOTE: To prevent damage,never exceed the rated capacity of the SCALE.

ITEM	RCS-50	RCS-7040
液晶显示屏 LCD Display	<p>三种单位可选择(UnitShift): 公斤/英镑/盎司(KG/LB/OZ) 液晶显示屏尺寸(Lcd Size): 67mm × 23mm 显示屏: 7位显示 (7 Digits Display)</p>	
称重范围 Range of weight	0-50KG or-110 LB or 0 LB 00.00 OZ-110 LB 00.00 OZ	0-100KG or-220 LB or 0 LB 00.00 OZ-220 LB 00.00 OZ
精确性 Accuracy	0.02% of reading	0.05% of reading
分辨率 Resolution	± 2g/0.006 LB/0.08 OZ	± 5g/0.01 LB/0.25 OZ
单位 Unit	KG/LB/OZ(公斤/英镑/盎司)	
电源 Power supply	9V DC(直流9V)	
使用温度 Operating temp	32F-113F(0℃-45℃)	
秤盘尺寸 Platform size	8-3/4" × 8-3/4" 223 × 223mm	
电池寿命 Battery life	30 Hours Continuous Use	
重量 Weight	2.485KG(5.47 LB)	

Spare Parts & Accessories For WK-VG89



真空表 Vacuum Meter





WK-688L

制冷剂压力及真空压强两用数显表 Digital Pressure Vacuum Gauge

Feature

- ★ Pressure and vacuum gauge shift function
- ★ Real-time vacuum pressure test and percent indicate
- ★ Low power indicate. Batteries life: 30H. 9v.
- ★ Pressure units: Kpa, Bar, Psi, Torr, Kg/cm², InHg, MmHg
- ★ Temperature units: F, °C
- ★ Test range UAC: URC: -101 Kpa-6Mpa
RXX: -101 Kpa-4Mpa
For WK688L, WK688H
- ★ Resolution: 1Kpa
- ★ Accuracy: ± 0.5%
- ★ Overload: 100Bar, 10Mpa
- ★ Operating temp.: -20°C ~ 60°C

产品特点

- ★ 冷媒表与真空相互切换。
- ★ 可测量真空压力并以百分比提示真空度。
- ★ 电池低电压提示，电池使用寿命为30小时，9 v电池。
- ★ 测量压力单位为: Kpa, Bar, Psi, Torr, Kg/cm², InHg, MmHg
- ★ 测量温度单位为: F, °C
- ★ 测量范围 UAC: URC: -101 Kpa-6Mpa
RXX: -101 Kpa-4Mpa
适用于 WK688L, WK688H
- ★ 最小值: 1Kpa
- ★ 传感器精度: ± 0.5%
- ★ 过载限值: 100Bar, 10Mpa
- ★ 适用范围: -20°C ~ 60°C

数显单表结构图 Digital Gauge Frame Drawing

1. Refrigerants Select "+"
2. Hold: fast select
1. 制冷剂选择键
2. 长按快进

Power ON/OFF
电源开关

1. Press to "ZERO"
2. Default Refrigerants Status Hold 2Sec Vacuum Status

1. 屏幕清零键
2. 长按清零键2秒切换到真空表模式



Default Refrigerants Status 制冷表模式



URC = Vacuum 0.00%
0.00% Vacuum pressure percent indicate

Hold 2 Sec Vacuum Status 真空表模式



WK-688H

LCD Display
LCD液晶屏

1. Pressure/Temperatures Units
2. Hold 2 sec Background Light ON/OFF
1. 压力单位选择键
2. 长按2秒背光源开关

1. Refrigerants Select "+"
2. Hold: fast select
1. 制冷剂选择键
2. 长按快退

高精度压力传感器
Pressure sensor

序号 Unit	WK-688H Unit Refrigerant(高压)	WK-688L Refrigerant(低压)	序号 Unit	WK-688H Unit Refrigerant(高压)	WK-688L Refrigerant(低压)	序号 Unit	WK-688H Unit Refrigerant(高压)	WK-688L Refrigerant(低压)	序号 Unit	WK-688H Unit Refrigerant(高压)	WK-688L Refrigerant(低压)
1	R11	R11	22	R290	R290	43	R410B-LIQ	R410B-VAP	64	R424A-LIQ	R424-VAP
2	R113	R113	23	R32	R32	44	R411A-LIQ	R411A-VAP	65	R425A-LIQ	R425A-VAP
3	R114	R114	24	R401A-LIQ	R401A-VAP	45	R411B-LIQ	R411B-VAP	66	R426A-LIQ	R426A-VAP
4	R115	R115	25	R401B-LIQ	R401B-VAP	46	R412A-LIQ	R412A-VAP	67	R427A-LIQ	R427A-VAP
5	R116	R116	26	R401C-LIQ	R401C-VAP	47	R413A-LIQ	R413A-VAP	68	R428A-LIQ	R428A-VAP
6	R12	R12	27	R402A-LIQ	R402A-VAP	48	R414A-LIQ	R414A-VAP	69	R50	R50
7	R123	R123	28	R402B-LIQ	R402B-VAP	49	R414B-LIQ	R414B-VAP	70	R500-LIQ	R500-VAP
8	R124	R124	29	R403A-LIQ	R403A-VAP	50	R415A-LIQ	R415A-VAP	71	R501-LIQ	R501-VAP
9	R125	R125	30	R403B-LIQ	R403B-VAP	51	R415B-LIQ	R415B-VAP	72	R502-LIQ	R502-VAP
10	R13	R13	31	R404A-LIQ	R404A-VAP	52	R416A-LIQ	R416A-VAP	73	R503-LIQ	R503-VAP
11	R134a	R134a	32	R405A-LIQ	R405A-VAP	53	R417A-LIQ	R417A-VAP	74	R504-LIQ	RS04-VAP
12	R14	R14	33	R406A-LIQ	R406A-VAP	54	R418A-LIQ	R418A-VAP	75	R507A-LIQ	R507A-VAP
13	R141B	R141B	34	R407A-LIQ	R407A-VAP	55	R419A-LIQ	R419A-VAP	76	R508A-LIQ	R508A-VAP
14	R142B	R142B	35	R407B-LIQ	R407B-VAP	56	R420A-LIQ	R420A-VAP	77	R508B-LIQ	R508B-VAP
15	R143A	R143A	36	R407C-LIQ	R407C-VAP	57	R421A-LIQ	R421A-VAP	78	R509A-LIQ	R509A-VAP
16	R152A	R170	37	R407D-LIQ	R407D-VAP	58	R421B-LIQ	R421B-VAP	79	R600	R600
17	R170	R152A	38	R408A-LIQ	R408A-VAP	59	R422A-LIQ	R422A-VAP	80	R600A	R600A
18	R21	R21	39	R409A-LIQ	R409A-VAP	60	R422B-LIQ	R422B-VAP	81	R744	R744
19	R218	R218	40	R409B-LIQ	R409B-VAP	61	R422C-LIQ	R422C-VAP			
20	R22	R22	41	R41	R41	62	R422D-LIQ	R422D-VAP			
21	R23	R23	42	R410A-LIQ	R410A-VAP	63	R423A-LIQ	R423A-VAP			

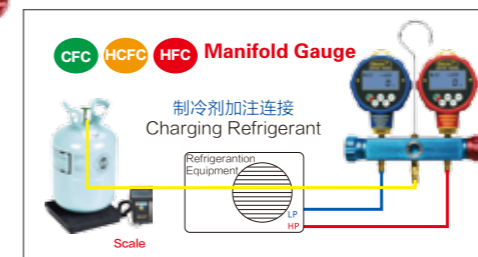


WK-6881H

数显表阀 Digital Manifolds



WK-6882



多功能 超高精度

MULTI FUNCTION SUPERHIGH ACCURACY



WK-6881H



WK-6882-L



WK-6884-L

型号 Item No.	管子长度 Size Of Hose	规格 Description
WK-6881H	36"(90cm)	Single Digital manifolds+2Pcs of charging hose. Working pressure,800 PSI,Burst 4000PSI+1Pcs of 9V Battery+1Pcs of Adapter AD-89+1Pcs of suitcase.
	60"(150cm)	
	72"(180cm)	
WK-6881L	36"(90cm)	单阀数显表+2根加液管，工作压力800PSI，爆破压力4000PSI+1块9V电池+1只转换接头AD-89+1只手提箱。
	60"(150cm)	
	72"(180cm)	
WK-6882-L	36"(90cm)	2Valve Digital manifolds+3Pcs of charging hose. Working pressure,800PSI,Burst 4000PSI+2Pcs of 9V Battery+2Pcs of Adapter AD-89+1Pcs of suitcase.
	60"(150cm)	
	72"(180cm)	
WK-6884-L	60"(150cm)	4Valve Digital manifolds+4Pcs of charging hose.Working pressure,800 PSI,Burst 4000 PSI+2Pcs of 9V Battery+2Pcs of Adapter AD-89+1Pcs of suitcase. 四阀数显表+4根加液管，工作压力800PS，爆破压力4000PSI+2块9V电池+2只转换接头AD-89+1只手提箱。

WK-6889-L

数显表阀

Digital Manifolds

80多种制冷剂可选,包括R1234YF,R32,R600A
OVER 80 REFRIGERANTS INCLUDE
R1234YF,R32,R600A

高清LCD显示屏
HIGH DEFINITION LCD SCREEN

质感软胶按键
TEXTURE SOFT RUBBER BUTTON



钳型热偶温度传感器

1/4英寸标准接口
1/4"SAE BRASS CONNECTION

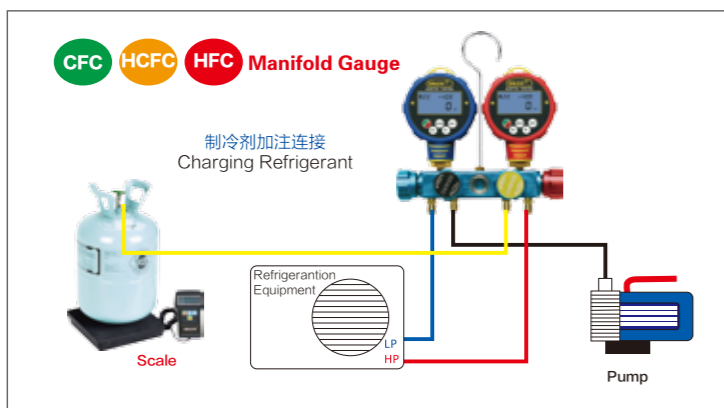


电池电量指示
BATTERY LEVEL INDICATOR

精准显示饱和温度
ACCURATE DISPLAY SATURATION TEMPERATURE

精准显示过冷过热度
ACCURATE DISPLAY SUPER
HEAT AND SUBCOOL

横膜式阀门质感开关
TEXTURE DIAPHRAGM VALVE KNOB



WK-6889-L

型号 Item No.	管子长度 Size Of Hose	规格 Description
WK-6889-L	60"(150cm)	2Valve Digital manifolds+3 Pcs of charging hose.Working pressure,800 PSI, Burst 4000 PSI+5 Pcs of 1.5V Battery+2 Pcs of temperature sensor+2 Pcs of Adapter AD-89 +1 Pcs of suitcase. 2阀数显表+3根加液管, 工作压力800PSI, 爆破压力4000PSI+5块1.5V电池+2钳型热偶温度传感器+2只转换接头AD-89+1只手提箱。



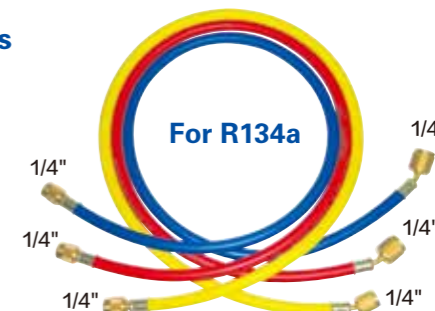
For R12 R22 & R502

R12 R22 & R502 Standard Charging Hose R12 R22 & R502 标准加液管

CT-336-RYB 3 pcs 36"(90cm)red,yellow & blue hoses sets
CT-360-RYB 3 pcs 60"(150cm)red,yellow & blue hoses sets
CT-372-RYB 3 pcs 72"(180cm)red,yellow & blue hoses sets
Working Pressure 500PSI Burst 2500PSI.
Designed to meet 1/4"SAE requirement for refrigerant permutation and assure long work life.
最大的工作压力为500PSI,最大爆破压力为2500PSI。
1/4"SAE的接头,该优质管能确保长时间的工作寿命。

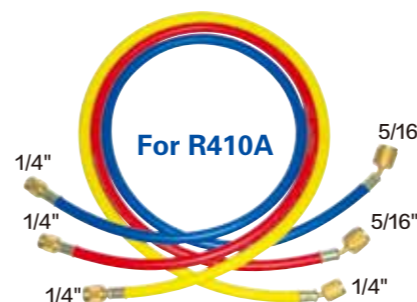
R134 Premiom Charging Hose With 1/4"SAE Fittings R134 优质胶管1/4"SAE

CT-336-RYB-P 3 pcs 36"(90cm)red,yellow & blue hoses sets
CT-360-RYB-P 3 pcs 60"(150cm)red,yellow & blue hoses sets
CT-372-RYB-P 3 pcs 72"(180cm)red,yellow & blue hoses sets
Working Pressure 600PSI Burst 3000PSI.
Designed to meet 1/4"SAE requirement for refrigerant permutation and assure long work life.
最大的工作压力为600PSI,最大爆破压力为3000PSI。
1/4"SAE的接头,该优质管能确保长时间的工作寿命。



For R134a

R410 High Pressure Charging Hose R410 高压胶管5/16"SAE



For R410A

CT-336-RYB-H 3 pcs 36"(90cm)red,yellow & blue hoses sets
CT-360-RYB-H 3 pcs 60"(150cm)red,yellow & blue hoses sets
CT-372-RYB-H 3 pcs 72"(180cm)red,yellow & blue hoses sets
Special material high pressure Charging hose.
Working pressure 800PSI Burst 4000PSI.
All the hoses with 1/4"SAE、5/16"SAE connections are optional.
特殊材质能够耐高压的胶管。
最大的工作压力为800PSI,最大爆破压力为4000PSI。
所有胶管可提供1/4"SAE、5/16"SAE的接头。

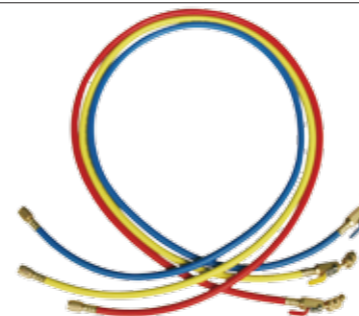
R410 High Pressure Charging Hose With Ball Valve R410 带球阀高压胶管接头

R410-RV For red hose with ball valve
R410-YV For yellow hose with ball valve
R410-BV For blue hose with ball valve
Special material high pressure Charging hose.
Working pressure 800PSI Burst 4000PSI.
All the hoses with 1/4"SAE、5/16"SAE connections are optional.
特殊材质能够耐高压的胶管。
最大的工作压力为800PSI,最大爆破压力为4000PSI。
所有胶管可提供1/4"SAE、5/16"SAE的接头。



带球阀加液接头

R410 High Pressure Charging Hose With Ball Valve R410 带球阀高压胶管5/16"SAE

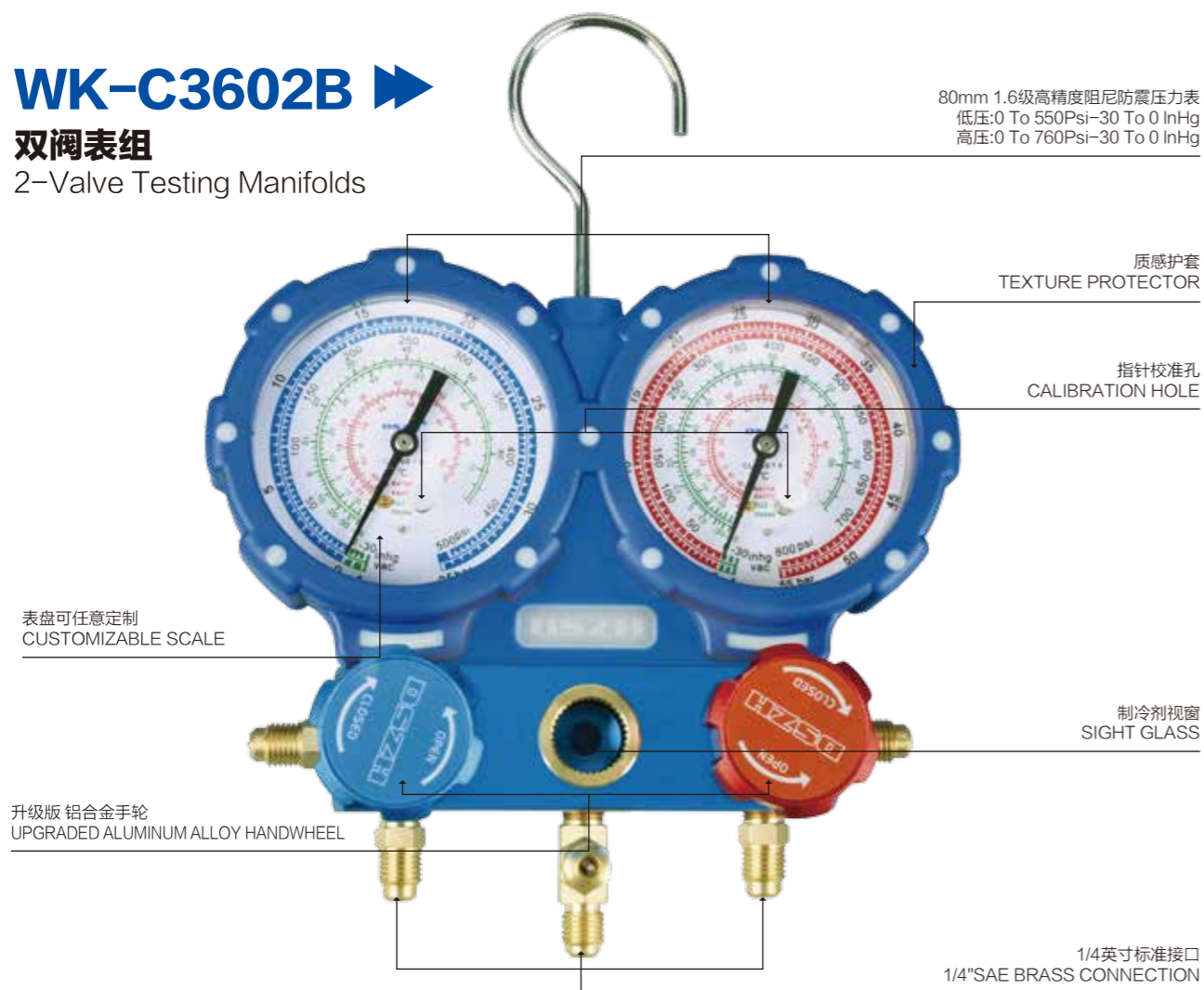


CT-336-RYB-HV

CT-336-RYB-HV 3 pcs 36"(90cm)red,yellow & blue hoses sets with shut-off ball valve
CT-360-RYB-HV 3 pcs 60"(150cm)red,yellow & blue hoses sets with shut-off ball valve
CT-372-RYB-HV 3 pcs 72"(180cm)red,yellow & blue hoses sets with shut-off ball valve
Special material high pressure Charging hose.
Working pressure 800PSI Burst 4000PSI.
All the hoses with 1/4"SAE、5/16"SAE connections are optional.
特殊材质能够耐高压的胶管。
最大的工作压力为800PSI,最大爆破压力为4000PSI。
所有胶管可提供1/4"SAE、5/16"SAE的接头。

WK-C3602B

双阀表组
2-Valve Testing Manifolds



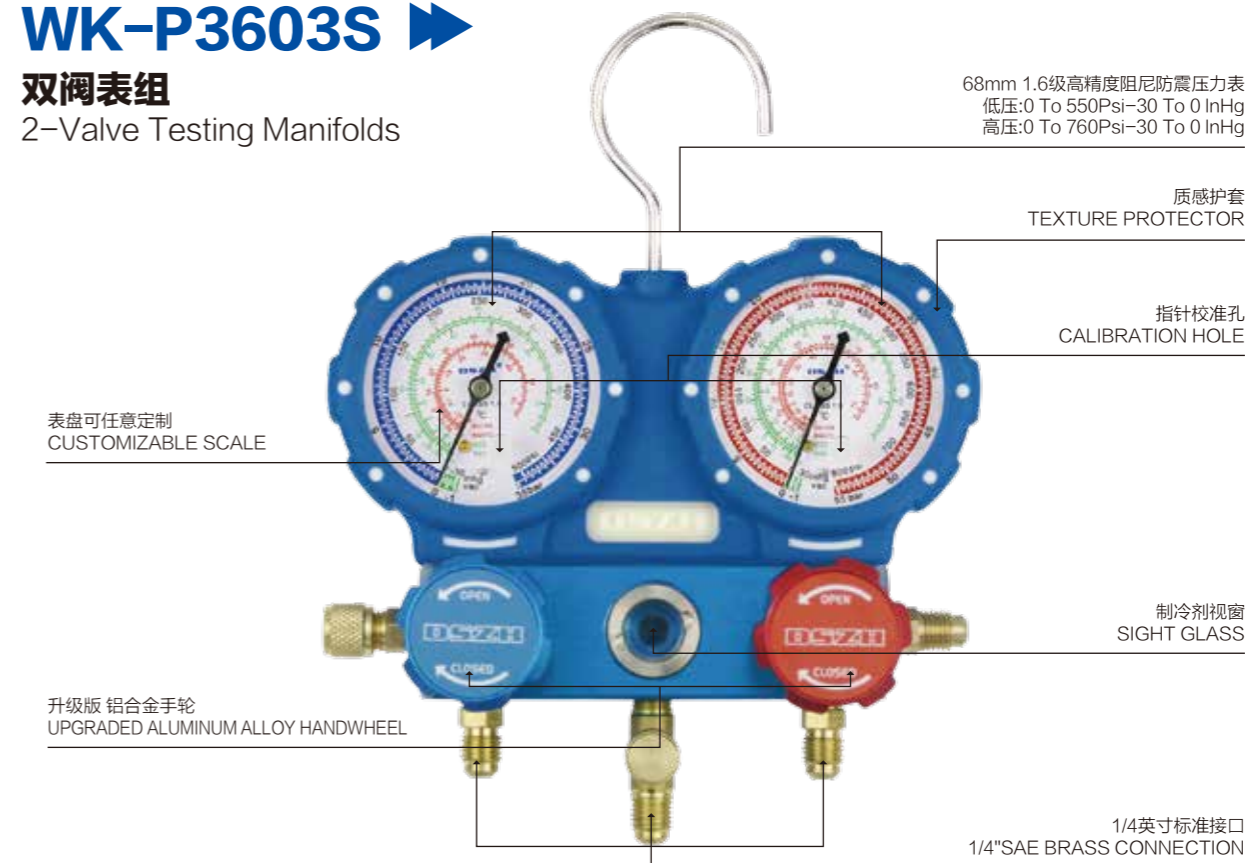
高精度 超防震

HIGH ACCURACY SUPER SHOCKPROOF

	Dimeter Of Gauge 68mm(表盘直径)	Dimeter Of Gauge 80mm(表盘直径)	Gauge Scale (表头刻度)	Size Of Hose (管子长度)	Description (规格)
<p>WK-C3601S</p>	WK-C3601S	WK-C3601B	R22 R404A R134a	36" (90cm)	3pcs charging hoses. Working pressure 600PSI Burst 3000PSI. A sight glass brass/aluminum body. Designed to meet 1/4" SAE. 红、黄、蓝三根加液管, 工作压力 600PSI 爆破压力 3000PSI. 带视镜铜/铝阀体, 接头尺寸 1/4" SAE.
	WK-C6001S	WK-C6001B		60" (150cm)	
	WK-C7201S	WK-C7201B		72" (180cm)	
<p>WK-C3602S</p>	WK-C3602S	WK-C3602B	R22 R404A R410A R407C	36" (90cm)	3pcs charging hoses. Working pressure 800PSI Burst 4000PSI. A sight glass brass/aluminum body. With 2PCS adapter AD-89. Designed to meet 1/4" SAE. 红、黄、蓝三根加液管, 工作压力 800PSI 爆破压力 4000PSI. 带视镜铜/铝阀体, 接头尺寸 1/4" SAE.
	WK-C6002S	WK-C6002B		60" (150cm)	
	WK-C7202S	WK-C7202B		72" (180cm)	
<p>WK-C3603S</p>	WK-C3603S	WK-C3603B	R22 R134a R404A	36" (90cm)	3pcs red, yellow & blue charging hoses. Working pressure 500PSI Burst 2500PSI. A sight glass brass/aluminum body. Designed to meet 1/4" SAE. 红、黄、蓝三根加液管, 工作压力 500PSI 爆破压力 2500PSI. 带视镜铜/铝阀体, 接头尺寸 1/4" SAE.
	WK-C6003S	WK-C6003B		60" (150cm)	
	WK-C7203S	WK-C7203B		72" (180cm)	

WK-P3603S

双阀表组
2-Valve Testing Manifolds



质感护套 超级防震

TEXTURE PROTECTOR & SUPER SHOCK PROOF

	Dimeter Of Gauge 68mm(表盘直径)	Dimeter Of Gauge 80mm(表盘直径)	Gauge Scale (表头刻度)	Size Of Hose (管子长度)	Description (规格)
<p>WK-P3601S</p>	WK-P3601S	WK-P3601B	R134a	36" (90cm)	3pcs charging hoses. Working pressure 600PSI Burst 3000PSI. A sight glass brass/aluminum body. With QC-19L/19H. Designed to meet 1/4" SAE. 红、黄、蓝三根加液管, 工作压力 600PSI 爆破压力 3000PSI. 带视镜铜/铝阀体, 接头尺寸 1/4" SAE. 带 QC-19L/19H 快速接头。
	WK-P6001S	WK-P6001B		60" (150cm)	
	WK-P7201S	WK-P7201B		72" (180cm)	

	Dimeter Of Gauge 68mm(表盘直径)	Dimeter Of Gauge 80mm(表盘直径)	Gauge Scale (表头刻度)	Size Of Hose (管子长度)	Description (规格)
<p>WK-P3602S</p>	WK-P3602S	WK-P3602B	R22 R404A R410A R407C	36" (90cm)	3pcs charging hoses. Working pressure 800PSI Burst 4000PSI. A sight glass brass/aluminum body. With 2PCS adapter AD-89. Designed to meet 1/4" SAE. 红、黄、蓝三根加液管, 工作压力 800PSI 爆破压力 4000PSI. 带视镜铜/铝阀体, 接头尺寸 1/4" SAE.
	WK-P6002S	WK-P6002B		60" (150cm)	
	WK-P7202S	WK-P7202B		72" (180cm)	

	Dimeter Of Gauge 68mm(表盘直径)	Dimeter Of Gauge 80mm(表盘直径)	Gauge Scale (表头刻度)	Size Of Hose (管子长度)	Description (规格)
<p>WK-P3603S</p>	WK-P3603S	WK-P3603B	R22 R134a R404A	36" (90cm)	3pcs red, yellow & blue charging hoses. Working pressure 500PSI Burst 2500PSI. A sight glass brass/aluminum body. Designed to meet 1/4" SAE. 红、黄、蓝三根加液管, 工作压力 500PSI 爆破压力 2500PSI. 带视镜铜/铝阀体, 接头尺寸 1/4" SAE.
	WK-P6003S	WK-P6003B		60" (150cm)	
	WK-P7203S	WK-P7203B		72" (180cm)	

WK-N364-14 ▶▶

杠杆型弯管器

Lever Type Tube Bender

专利产品 PATENTED



易操作 完美弯管

EASY OPERATION PERFECT BENDING



手柄可90度调节
Two-stage design, save effort



锁钩设计
Fixing hook locate the tube



弯管滑轮设计
Bender wheel



人体功能学手柄设计
Ergonomic designed handle

★ Can be used for copper、aluminum、iron tubings 可用于铜管、铝管、铁管

产品技术参数 Technical Parameter

型号 Item No.	规格 Description	
WK-N364A-06	use for 3/8" O.D.Tubing	用于3/8"外径的管子
WK-N364M-06	use for 10mm O.D.Tubing	用于10mm外径的管子
WK-N364A-08	use for 1/2" O.D.Tubing	用于1/2"外径的管子
WK-N364M-08	use for 12mm O.D.Tubing	用于12mm外径的管子
WK-N364-10	use for 5/8" & 16mm O.D.Tubing	用于5/8" & 16mm外径的管子
WK-N364-12	use for 3/4" & 19mm O.D.Tubing	用于3/4" & 19mm外径的管子
WK-N364-14	use for 7/8" & 22mm O.D.Tubing	用于7/8" & 22mm外径的管子

WK-1012-A ▶▶

180° 2合1阶梯式新型专利两用弯管器

180° 2-in-1 Ladder Type Tube Bender



WK-1012-A-180° For 3/8" & 1/2" size O.D.Tubing

WK-1012-M-180° For 10mm & 12mm size O.D.Tubing

- ★ Aluminum alloy body
- ★ Bend radius 23mm For 3/8" (10mm)O.D.Tubing
- ★ Bend radius 35.8mm For 1/2" (12mm)O.D.Tubing
- ★ Open size-slips on tubing at any point,can bend 0.4mm thin tube without distortion.
- ★ Calibrated markings for making accurate left-hand, right-hand, and offset bends 180° start requires less effort.
- ★ Makes bending fast and easy.

- ★ 铝合金材料
- ★ 10mm(3/8")弯管的半径为: 23mm
- ★ 12mm(1/2")弯管的半径为: 35.8mm
- ★ 可以弯出标准而精确180°的铜管
- ★ 可以弯薄到0.4mm的管而不变形
- ★ 实用新型专利和外观设计专利



采用人体工程学设计的防滑手柄
Ergonomic design skidproof handle



多规格阶梯式弯管槽
Multi stepped bender grooves



可验证铜管尺寸的孔设计
Tube size testing design



对应不同的管径可移动式弯管钩设计
Removable hook design for multi tube sizes



WK-N368-180°

180° 3-in-1 TUBE BENDER

180° 3合1新型三用弯管器6mm, 8mm, 10mm
★ For 1/4"、5/16" & 3/8"size O.D.Tubing
★ Aluminum alloy body,Bend radius 15/16"(24mm).
★ 弯管半径为: 15/16"(24mm)。



WK-N268-180°

180° 2-in-1 TUBE BENDER

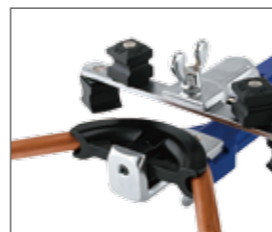
180° 2合1新型两用弯管器6mm, 8mm
★ For 1/4" & 5/16" size O.D.Tubing
★ Aluminum alloy body,Bend radius 11/16"(17.5mm).
★ 弯管半径为: 11/16"(17.5mm)。

WK-R999

90° 组合手动弯管套装
90° Multi Bender Kit



吹塑盒包装 Plastic box



反弯管功能
Reverse bending

品名	规格 Description	
WK-R999+CT-207	For Inch: 1/4", 5/16", 3/8", 1/2", 5/8", 3/4", 7/8" O.D. Tubing For Metric: 6, 8, 10, 12, 16, 19, 22mm O.D. Tubing	In blow-mold carrying case. Aluminum wheel

多用弯管器 Tube Bender 3-in-1 & 4-in-1



CT-369-FHA-180°
For Inch: 3/16", 1/4", 5/16" & 3/8" O.D. Tubing



CT-368-90°
For Inch: 1/4", 5/16" & 3/8" O.D. Tubing

弯管器 Tube Bender

型号 Item No.	用于 Size For	弯管半径 Bend Radius
CT-364A-06	3/8"	23mm
CT-364A-08	1/2"	35.8mm
CT-364M-08	12mm	35.8mm
CT-364-10	16mm & 5/8"	54.4mm
CT-364-12	19mm & 3/4"	75.3mm
CT-364-14	22mm & 7/8"	82.1mm

WK-666

90° 组合手动弯管套装
90° Multi Bender Kit

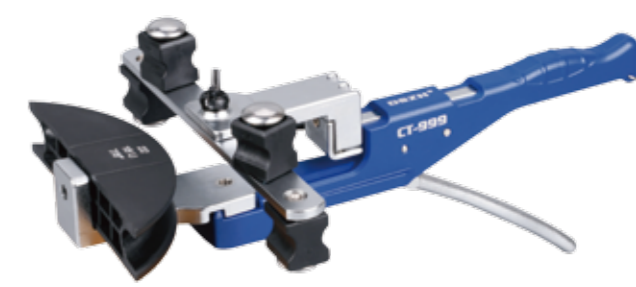


品名规格 Description		特点 Feature
For 5mm, 6mm, 8mm, 10mm, 12mm, 1/4", 5/16", 3/8" & 1/2" O.D. Tubing	In blow-mold carrying case. Aluminum alloy wheel(铝轮)	<ul style="list-style-type: none"> ★ 专为小管径设计 ★ 适用于空调制冷、环境控制、供油、汽车、液压和气压系统。 ★ 节约购买的储存预备管件的费用 ★ 人体工程学设计适用于单手操作 ★ 紧凑设计可在受限空间内弯管 ★ 机械棘轮快速精确弯管 ★ 可弯壁厚为0.4mm的薄管

反弯管 Reverse Bending



CT-999F



CT-999R

型号 Item No.	品名规格 Description	
CT-999	CT-999+WK-532 +CT-207	For Inch: 1/4", 5/16", 3/8", 1/2", 5/8", 3/4", 7/8" O.D. Tubing. For Metric: 6, 8, 10, 12, 16, 19, 22mm O.D. Tubing.
CT-999R	CT-999+WK-532 +CT-207	For Inch: 3/8", 1/2", 5/8", 3/4", 7/8" O.D. Tubing. For Metric: 10, 12, 16, 19, 22mm O.D. Tubing.
CT-999F	CT-999F+WK-532 +CT-207	For Inch: 1/4", 5/16", 3/8", 1/2", 5/8", 3/4", 7/8" O.D. Tubing. For Metric: 6, 8, 10, 12, 16, 19, 22mm O.D. Tubing.
CT-999RF	CT-999F+WK-532 +CT-207	For Inch: 3/8", 1/2", 5/8", 3/4", 7/8" O.D. Tubing. For Metric: 10, 12, 16, 19, 22mm O.D. Tubing.

RLD-382P

制冷剂检漏仪

Refrigerant Gas Leak Detector

FEATURES:

Refrigerant Leak Detector is a perfect tool for maintaining the air-condition or a cooling system with compressor and Refrigerant.

This unit uses a newly developed semi-conductor sensor which is extremely sensitive for variety of general used Refrigerant.

功能特点:

制冷剂检漏仪是非常好的空调及带制冷剂、压缩机的制冷系统维修工具。此产品所采用的最新开发的半导体探头对各种常用制冷剂非常灵敏。

SenSitivity:

Refrigerant	H	M	L
R-22,134a	3g/year	15g/year	30g/year
R-404A,407C,410A	4g/year	20g/year	40g/year



7 LED MULTI COLOR VISUAL DISPLAY.

Enables user to pinpoint exact location of leak



Low Sensitivity Level(Green LED)



Medium Sensitivity Level(Orange LED)



High Sensitivity Level(Red LED)

产品技术参数 Technical Parameter

Alarm Method	Buzzer, Tricolor LED Bar Indicator	Disable Auto Power OFF	Press "ON/OFF" button then power on the meter
Power Usage	4 AA size(6V DC) Alkaline Batteries	Warm-Up Time	Approximately 45 seconds
Snake Tube Length	40cm(15.5")	Operating Temperature & Humidity	0 ~ 40°C, < 80%RH
Dimension/Weight	173x66x56mm(approximately 400g)	Storage Temperature & Humidity	-10 ~ 60°C, < 70%RH
Battery Life	Approximately 7 hours normal use	Detectable Gases	CFCs:R11,R12,R13; HCFCs:R22,R502,R500; HFCs:R134a,R123,R125,R23, R404A,R407C,R410A and other halogen based compounds
Auto Power OFF	10 minutes		
Altitude	< 2000M(6500')		

卤素检漏仪

Refrigerant Gas Leak Detector



CT-CPU05



CT-CPU06



DSA-200

产品技术参数 Technical Parameter

型号 Item No.	DSA-200	CT-CPU05	CT-CPU06
Dimensions	17cm × 6cm × 3.8cm	22.9cm × 6.5cm × 6.5cm	22.9cm × 6.5cm × 6.5cm
Batteries	2 × 1.5V'AA'Alkaline Batteries(3 VDC)		
Battery Life	40 hours		
Sensitivity	< 3g/year(0.1 oz/yr)		
Sensor lifetime	approx.30 hours		
Operating temperature	32-122°F(0-50°C)		
Warm up time	< 2 sec.	< 10 sec.	< 2 sec.
Response time	instantaneous		
Reset time	instantaneous		
Probe length	12"(30cm)	14"(33.5cm)	12"(30cm)

WK-RF100 ▶

无线冷媒加注秤
Wireless Charging Scale



超大流量 定量加注

Extra-Large Flow Quantity Charging



NOTE: To prevent damage, never exceed the rated capacity of the scale.
大流量可编程加注回收所有冷媒，精确度高，适用于汽车空调、商用空调、冷库等制冷机冷媒加注。



产品技术参数 Technical Parameter

ITEM	WK-RF100
最大称重能力 Capacity	100KG/220LB/220LB.00.00Z
单位转换 Units	KG/LB/OZ/LB+OZ
精确度 Accuracy	0.05%Of Reading+/-1 Least
分辨率 Resolution	Low Accuracy ± 5g; High Accuracy ± 2g
秤盘的尺寸 Platform Size	33.5 × 31.5 × 7.5cm
使用电压 Power	6 × 1.5V Alkaline Battery(7.5V DC+9VX)
电池寿命 Battery Life	60 Hours Continuous Use
使用温度 Operation Temperature	10°C-50°C(50°F-122°F)
重量 Weight	37KG(81.6 LB)

RCS-N9030 ▶

大流量可编程冷媒加注秤
Large Flow Programmable
Charging Scale

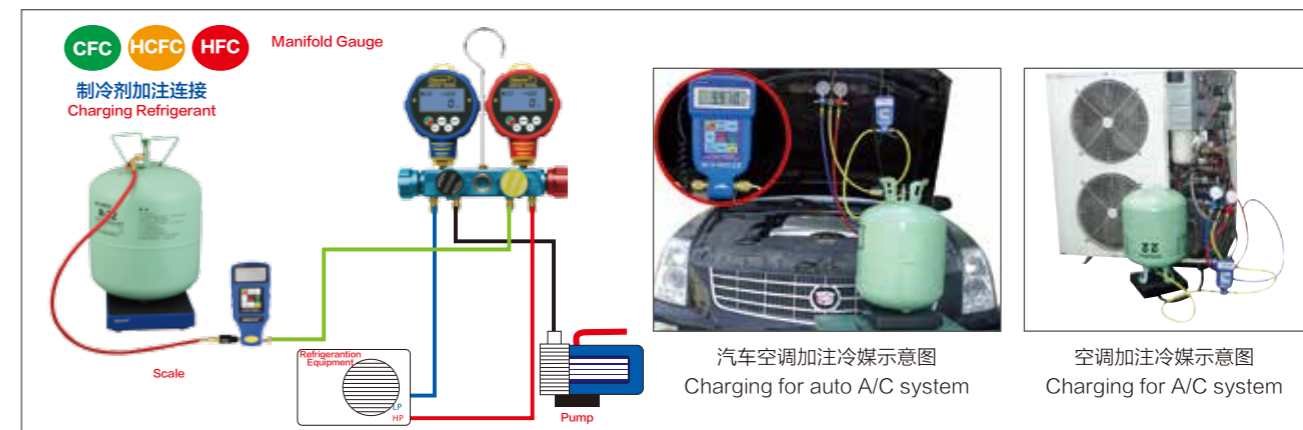


超大流量 定量加注

Extra-Large Flow Quantity Charging



NOTE: To prevent damage, never exceed the rated capacity of the scale.
大流量可编程加注回收所有冷媒，精确度高(100公斤5克精度)自动关闭、自动报警功能。适用于汽车空调、商用空调、冷库等制冷机冷媒加注。



ITEM	RCS-N50A	RCS-N9030
最大称重能力 Capacity	50KG/110LB/110LB.00.00Z	100KG/220LB/220LB.00.00Z
单位转换 Units	KG/LB/OZ	KG/LB/OZ
精确度 Accuracy	0.02% Of Reading+/-1 Least	0.05% Of Reading+/-1 Least
分辨率 Resolution	± 0.07 OZ/2G	± 0.25 OZ/5G
秤盘的尺寸 Platform Size	8-3/4" × 8-3/4" 223 × 223mm	
使用电压 Power	5 × 1.5V Alkaline Battery(7.5V DC)	
电池寿命 Battery Life	60 Hours Continuous Use	
使用温度 Operation Temperature	10°C-50°C(50°F-122°F)	
重量 Weight	2.74KG(6.03 LB)	

WK 3.5"/80mm Pressure Gauges & Liquid Filled Gauges



WK-8002L

WK-8002H

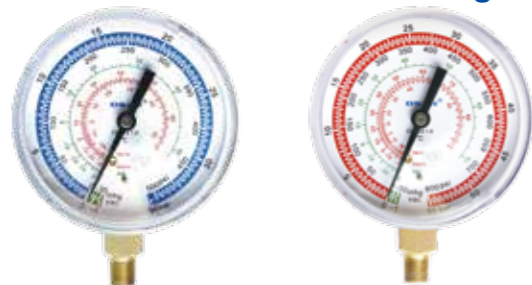
WK-RG80L

WK-RG80H

Item No.	WK-8001L/H	WK-8002L/H	WK-8003L/H	WK-RG80L/H	WK-RG81L/H	WK-RG82L/H
Refr.Scales	R407C,R134a, R22,R410A	R407C,R404A, R22,R410A	R12,R22, R134a	R404A,R22, R134a	R404A,R22, R134a,R410A	R410A
Rres.& Temp. Scales	Psi,Bar,°C	Bar,Psi,°C	Bar,Psi,°C	Psi,Kpa,°C Oil Filled	Psi,Kpa,°C Oil Filled	Psi,Kpa,°C Oil Filled

Item No.	WK-8004L/H	WK-8005L/H	WK-8006L/H	WK-8007L/H	WK-8008L/H
Refr.Scales	R410A,R32, R22,R134a	R404A,R22, R134a	R410A,R407C, R32,R134a	R410A,R407C, R32	R410A,R32, R22,R134a
Rres.& Temp. Scales	Bar,Psi,°C	Bar,Psi,°C	Psi,Bar,°C	Psi,Bar,°C	Bar,Psi,°C

WK 2.5"/68mm Pressure Gauges



WK-6815L

WK-6815H

Rubber Boots

橡胶保护套

WK-68LG/68HG
WK-80LG/80HG



68LG/HG & 80LG/HG Rubber Boots
For standard 68mm & 80mm gauges

Item No.	WK-6801L/H	WK-6802L/H	WK-6803L/H	WK-6804L/H	WK-6805L/H	WK-6806L/H
Refr.Scales	R410A	R22,R404A, R407C,R410A	R22,R404A, R134a	R410A,R32, R22,R134a	R22,R134a, R404A,R407C	R1234YF, R22,R134a,
Rres.& Temp. Scales	Kpa,Psi,°C,°F	Bar,Psi,°C	Kpa,Psi,°C	Bar,Psi,°C	Kpa,Psi,°C	Kpa,Psi,°C

Item No.	WK-6807L/H	WK-6808L/H	WK-6809L/H	WK-6810L/H	WK-6811L/H
Refr.Scales	R12,R22, R502,R134a,	R404A,R410A, R22,R134a	R22,R404A, R407C	R134a	R600
Rres.& Temp. Scales	Kg/cm²,Psi,°C	Psi,Bar,°C	Bar,Psi,°C	Psi,°C,°F	Bar,Psi,°C,°F

Item No.	WK-6812L/H	WK-6813L/H	WK-6814L/H	WK-6815L/H	WK-6816L/H
Refr.Scales	R22,R404A, R410A	R22,R134a,R404A, R407C,R410A	R410A,R407C, R32,R134a	R410A,R407C, R32	R410A,R32, R22,R134a
Rres.& Temp. Scales	Psi,°F	Bar,Psi,°C	Psi,Bar,°C	Psi,Bar,°C	Psi,Bar,°C

单表阀

Single Gauge Valve



WK-466H
WK-466L



WK-467-GL
WK-467-GH



WK-468-GL
WK-468-GH

铜架表组 Brass Testing Manifolds

Item No. 型号	Size Of Hose 管子长度
WK-536G-R22	36"(90cm)
WK-560G-R22	60"(150cm)
WK-536G-R134a	36"(90cm)
WK-560G-R134a	60"(150cm)
WK-536G-R410A	36"(90cm)
WK-560G-R410A	60"(150cm)

WK-536G

双阀表组 2-Valve Testing Manifolds

Item No. 型号
CT-136G-R22
CT-160G-R22
CT-236G-R134a
CT-260G-R134a
CT-336G-R410A
CT-360G-R410A

CT-136G/R12 R22

四阀表组 4-Valve Testing Manifolds

Item No. 型号	Size Of Hose 管子长度
CT-436G-R22	36"(90cm)
CT-460G-R22	60"(150cm)
CT-736G-R134a	36"(90cm)
CT-760G-R134a	60"(150cm)
CT-836G-R410A	36"(90cm)
CT-860G-R410A	60"(150cm)

CT-436G-R22

便携式表组 Manifolds With Hand-Carry Plastic Case

Item No. 型号	Size Of Hose 管子长度
CT-MC236G-R134a	36"(90cm)
CT-MC260G-R134a	60"(150cm)
CT-MC272G-R134a	72"(180cm)



CT-MC236G/134A

可调式快速接头 R134a Adjustable Quick Couplers

		Item No.	Description		
QC18-L	QC18-H	QC18-L	Low side × 1/4" male 90°	QC19-L	QC19-H
		QC18-H	High side × 1/4" male 90°		
		QC19-L	Low side × 1/4" male & female 90°		
		QC19-H	High side × 1/4" male & female 90°		

快速接头 R134a Quick Couplers

		Item No.	Colour	Description	
QC15	QC12	QC12-L	Blue	Low side × 1/4" male flare straight	QC12
		QC12-H	Red	High side × 1/4" male flare straight	
		QC15-L	Blue	Low side × 1/4" male flare 90°	
		QC15-H	Red	High side × 1/4" male flare 90°	

带阀芯转换接头 Brass Adapters

AD-78	AD-87	AD-89/98

Item No.	Female	Male	Other	Application
AD-78	1/2"-20 UNF(5/16"SAE)	1/4"SAE	W/core & Depressor	R-410A International
AD-87	1/4"SAE	1/2"-20 UNF(5/16"SAE)	W/core & Depressor	R-410A International
AD-89	1/2"-20 UNF(5/16"SAE)	1/4"SAE	W/core & Depressor	R-410A International
AD-98	1/4"SAE	1/2"-20 UNF(5/16"SAE)	W/core & Depressor	R-410A International

球阀 Ball Valves

		Item No.	Female 内螺纹	Male 外螺纹
BV01	BV451	BV01	1/4"SAE	1/4"SAE
		BV02	1/4"SAE	1/2"-20 UNF(5/16"SAE)
		BV03	1/2"-20 UNF(5/16"SAE)	1/4"SAE
		BV04	1/2"-20 UNF(5/16"SAE)	1/2"-20 UNF(5/16"SAE)
		BV901	1/4"SAE 90°	1/4"SAE
		BV902	1/4"SAE 90°	1/2"-20 UNF(5/16"SAE)
		BV903	1/2"-20 UNF(5/16"SAE)90°	1/4"SAE
		BV904	1/2"-20 UNF(5/16"SAE)90°	1/2"-20 UNF(5/16"SAE)
		BV451	1/4"SAE 45°	1/4"SAE
		BV452	1/4"SAE 45°	1/2"-20 UNF(5/16"SAE)
		BV453	1/2"-20 UNF(5/16"SAE)45°	1/4"SAE
		BV454	1/2"-20 UNF(5/16"SAE)45°	1/2"-20 UNF(5/16"SAE)
		BVM01		1/4"SAE × 2
		BVM02		1/2"-20 UNF(5/16"SAE) × 2
		BVM03		1/4"SAE-1/2"20 UNF(5/16"SAE)



WK-8P

表组扩孔器套装 Portable Box Set

Description	Item No.	Quantity
Deburrer	CT-207	1 PCS
Expanding tool	WK-622	1 PCS
Flaring Tool	WK-806AM	1 PCS
Manifold gauge	WK-3602S	1 PCS
Tube Cutter	WK-532	1 PCS
Plastic Box		1 PCS



WK-7P

手提工具箱 Portable Box Set

Description	Item No.	Quantity
Vacuum Pump	WK-115N	1 PCS
Deburrer	CT-207	1 PCS
Charging Hose	CT-360-RYB-P	1 PCS
Flaring Tool	WK-809	1 PCS
Expanding Tool	WK-622	1 PCS
Tube Cutter	WK-532	1 PCS
Manifold Gauge	WK-6003S	1 PCS
Aluminum Box		1 PCS



DS-20114

加注站 Charging Station

“Ideal for both new installation and existing service work.”

Description	Item No.	Quantity
Digital Manifolds	WK-6884	1PCS
Vacuum Pump	WK-215SV	1PCS
Charging Hose	CT-360-RYB-HV	1Set
Quick Coupler	QC-19 H/L	1Set
Charging Scale	RCS-7040	1Set
Barrow		1PCS

全系列智能真空泵

All Series Intelligent Vacuum Pumps



15CFM(7升)



2CFM-6CFM
(1.5升-3升)

智能真
空泵专家
VACUUM PUMP
SPECIALIST



6CFM-12CFM
(3升-6升)

安全 防爆，无火花
智能 无刷变频

Safety explosion-proof and sparkless.
Intelligent brushless and variable frequency.

高效 超快抽速
轻便 重量轻，便于携带和运输

Efficient ultra-fast pumping speed.
Portable light weight, easy to carry and transport.

智能真空泵

Intelligent Vacuum Pump

专利产品 PATENTED

特点 Feature

- ★无火花无刷电机适用于R1234YF,R290,R32等可燃制冷剂。
- ★外观新颖，更轻便。
- ★整体式缸体，气密性极高，质量更可靠。
- ★Sparkless brushless motor use for R1234YF,R290,R32 flammable refrigerants.
- ★Portable and appearance novel.
- ★Integrated cylinder,superior air impermeability.



单级智能真空泵 Single Stage Intelligent Vacuum Pump

型号 Item No.	WK-2S	WK-3S	WK-4S	WK-6S
速率 Flow Rate	2.5 CFM	3.5 CFM	4.5 CFM	6.5 CFM
	71 L/MIN	99 L/MIN	127 L/MIN	184 L/MIN
级数 Pole No.	单级 Single Stage	单级 Single Stage	单级 Single Stage	单级 Single Stage
极限真空 Ultimate Vac.	2 Pa	2 Pa	2 Pa	2 Pa
	60 microns	60 microns	60 microns	60 microns
功率 Power	1/4 HP	1/3 HP	1/3 HP	1/2 HP
接口 Inlet Port	1/4" & 3/8" flare	1/4" & 3/8" flare	1/4" & 3/8" flare	1/4" & 3/8" flare
泵油容量 Oil Capacity	340 ml	300 ml	300 ml	300 ml
外型尺寸 Dimension	267.5x130x265 mm	267.5x130x265 mm	267.5x130x265 mm	267.5x130x265 mm
净重 Weight	5.3 kgs	5.9 kgs	5.9 kgs	6.1 kgs

双级智能真空泵 Dual Stages Intelligent Vacuum Pump

型号 Item No.	WK-2BM	WK-3BM	WK-4BM
速率 Flow Rate	2.5 CFM	3.5 CFM	4.5 CFM
	71 L/MIN	99 L/MIN	127 L/MIN
级数 Pole No.	双级 Dual Stages	双级 Dual Stages	双级 Dual Stages
极限真空 Ultimate Vac.	2x10 ⁻¹ Pa	2x10 ⁻¹ Pa	2x10 ⁻¹ Pa
	15 microns	60 microns	60 microns
功率 Power	1/4 HP	1/3 HP	1/2 HP
接口 Inlet Port	1/4" & 3/8" flare	1/4" & 3/8" flare	1/4" & 3/8" flare
泵油容量 Oil Capacity	320 ml	300 ml	300 ml
外型尺寸 Dimension	296x130x265 mm	315x136x312mm	315x136x312mm
净重 Weight	6 kgs	6 kgs	7 kgs



◀ WK-8iBM

智能真空泵
Intelligent Vacuum Pump

专利产品 PATENTED



▲ 便携背带 Portable Straps

特点 Feature

- ★ 采用全程真空计 ATM~0.1 Pa。
- ★ 达到设定目标真空压力后背光闪烁提醒。
- ★ 无火花无刷电机适用于R1234YF, R290, R32等可燃制冷剂。
- ★ 外观新颖, 更轻便。
- ★ 整体式缸体, 气密性极高, 质量更可靠。
- ★ Whole pressure range vacuum meter ATM~0.1 Pa.
- ★ Backlight blinking when target pressure reached.
- ★ Sparkless brushless motor use for R1234YF, R290, R32 etc flammable refrigerants.
- ★ Portable and appearance novel.
- ★ Integrated cylinder, superior air impermeability.

智能真空泵(真空计型)

Intelligent Vacuum Pump(Vacuum Meter)

型号 Item No.	WK-8Si	WK-10Si	WK-12Si	WK-6iBM	WK-8iBM	WK-10iBM	WK-12iBM
速率 Flow Rate	8.5 CFM	10.5 CFM	12.5 CFM	6.5 CFM	8.5 CFM	10.5 CFM	12.5 CFM
	241 L/MIN	297 L/MIN	354 L/MIN	184 L/MIN	241 L/MIN	297 L/MIN	354 L/MIN
级数 Pole No.	单级 Single Stage	单级 Single Stage	单级 Single Stage	双级 Dual Stages	双级 Dual Stages	双级 Dual Stages	双级 Dual Stages
极限真空 Ultimate Vac.	2 Pa	2 Pa	2 Pa	2x10 ⁻¹ Pa	2x10 ⁻¹ Pa	2x10 ⁻¹ Pa	2x10 ⁻¹ Pa
	60 microns	60 microns	60 microns	15 microns	15 microns	15 microns	15 microns
功率 Power	1HP	1HP	1HP	1HP	1HP	1HP	1HP
接口 Inlet Port	1/4" & 3/8" flare	1/4" & 3/8" flare	1/4" & 3/8" flare	1/4" & 3/8" flare	1/4" & 3/8" flare	1/4" & 3/8" flare	1/4" & 3/8" flare
泵油容量 Oil Capacity	600 ml	600 ml	600 ml	550 ml	550ml	600 ml	600 ml
外型尺寸 Dimension	315x136x312mm	315x136x312mm	315x136x312mm	352x136x312mm	352x136x312mm	352x136x312mm	352x136x312mm
净重 Weight	11 kgs	11 kgs	11 kgs	11.5 kgs	11.5 kgs	11.5 kgs	11.5 kgs



◀ WK-8BM

智能真空泵
Intelligent Vacuum Pump

专利产品 PATENTED



▲ 便携背带 Portable Straps

特点 Feature

- ★ 无火花无刷电机适用于R1234YF, R290, R32等可燃制冷剂。
- ★ 外观新颖, 更轻便。
- ★ 整体式缸体, 气密性极高, 质量更可靠。
- ★ Sparkless brushless motor use for R1234YF, R290, R32 etc flammable refrigerants.
- ★ Portable and appearance novel.
- ★ Integrated cylinder, superior air impermeability.

智能真空泵(机械表型)

Intelligent Vacuum Pump(Pressure Gauge)

型号 Item No.	WK-8S	WK-10S	WK-12S	WK-6BM	WK-8BM	WK-10BM	WK-12BM
速率 Flow Rate	8.5 CFM	10.5 CFM	12.5 CFM	6.5 CFM	8.5 CFM	10.5 CFM	12.5 CFM
	241 L/MIN	297 L/MIN	354 L/MIN	184 L/MIN	241 L/MIN	297 L/MIN	354 L/MIN
级数 Pole No.	单级 Single Stage	单级 Single Stage	单级 Single Stage	双级 Dual Stages	双级 Dual Stages	双级 Dual Stages	双级 Dual Stages
极限真空 Ultimate Vac.	2 Pa	2 Pa	2 Pa	2x10 ⁻¹ Pa	2x10 ⁻¹ Pa	2x10 ⁻¹ Pa	2x10 ⁻¹ Pa
	60 microns	60 microns	60 microns	15 microns	15 microns	15 microns	15 microns
功率 Power	1HP	1HP	1HP	1HP	1HP	1HP	1HP
接口 Inlet Port	1/4" & 3/8" flare	1/4" & 3/8" flare	1/4" & 3/8" flare	1/4" & 3/8" flare	1/4" & 3/8" flare	1/4" & 3/8" flare	1/4" & 3/8" flare
泵油容量 Oil Capacity	600 ml	600 ml	600 ml	550 ml	550ml	600 ml	600 ml
外型尺寸 Dimension	315x136x312mm	315x136x312mm	315x136x312mm	352x136x312mm	352x136x312mm	352x136x312mm	352x136x312mm
净重 Weight	11 kgs	11 kgs	11 kgs	11.5 kgs	11.5 kgs	11.5 kgs	11.5 kgs

WK-15BM ▶▶

智能真空泵

Intelligent Vacuum Pump



特点

整体双缸结构

超高气密性
更高极限真空

工业级设计

超级耐用
超高抽气速率

内置智能控制阀

智能防返流
制冷系统停机后，免受油的污染

设有气镇阀

加速抽出蒸气，不致于污染油质

智能电机

功率强劲，可在-1℃环境中正常启动
采用无刷变频电机，适用于R32,R600等所有冷媒

嵌入式真空表

精准，直观，方便

FEATURE

Overall Double Steel Structure

Ultra-high tightness.
Higher ultimate vacuum.

Industrial-grade Design

Super durable.
Ultra-high flow rate.

Built-in intelligent control valve

Intelligent anti-reflux.
Avoid oil contamination When the refrigeration system is shut down.

Gas Ballast Valve

Accelerate the extraction of steam without contaminating the oil.

Intelligent Motor

Powerful, easy to start in -1° C environment.
Brushless variable frequency motor, suitable for all kinds of refrigerants such as R32, R600 and so on.

Embedded Vacuum Gauge

Accurate, intuitive and convenient.

WK-15BM ▶▶

智能真空泵

Intelligent Vacuum Pump

适用于中央空调、大型冷库的抽真空

Adapt for central A/C, Large A/C



技术精湛 卓越品质

TECHNICAL EXCELLENCE OUTSTANDING QUALITY

型号 Item No.	WK-15BM
速率 Flow Rate	15 CFM
	25 m³/h
级数 Pole No.	双级 Dual Stages
电机功率 Power	5x10 ⁻¹ Pa
极限真空 Ultimate Vac.	15 microns
接口 Inlet Port	1/4" & 3/8" flare
泵油容量 Oil Capacity	1000 ml
外型尺寸 Dimension	364x176x310 mm
净重 Weight	12.5 kgs

DSZH 真空泵 DSZH Vacuum Pump



Chinese Patent



Perfect Exterior



Large Oil Sight Glass

单级真空泵 Single Stage

Item No. 型号	For Overseas 外销	WK-115	WK-125	WK-135	WK-160	WK-180	WK-1100
	For China 内销	WK-1S1C	WK-1S1.5C	WK-1S2C	WK-1S3C	WK-1S4C	WK-1S5C
Flow Rare 速率	50 Hz	1.8 CFM	2.5 CFM	3.5 CFM	6.0 CFM	8.0 CFM	10.0 CFM
		42 L/MIN	70 L/MIN	100 L/MIN	170 L/MIN	226 L/MIN	283 L/MIN
	60 Hz	2.0 CFM	3.0 CFM	4.0 CFM	7.0 CFM	9.0 CFM	12.0 CFM
Ultimate Vac. 极限真空	Partial Pressure 分压	2 Pa	2 Pa	2 Pa	2 Pa	2 Pa	2 Pa
	Total Pressure 总压	150 Microns	150 Microns	150 Microns	150 Microns	150 Microns	150 Microns
Power 功率		1/4 HP	1/4 HP	1/3 HP	1/2 HP	3/4 HP	1 HP
Inlet Port 接口		1/4" Flare	1/4" Flare	1/4" Flare	1/4" & 3/8" Flare	1/4" & 3/8" Flare	1/4" & 3/8" Flare
Oil Capacity 泵油容量		230 ml	180 ml	240 ml	430 ml	520 ml	500 ml
Dimension 外型尺寸		290 × 124 × 227mm	290 × 124 × 227mm	303 × 127 × 249mm	350 × 140 × 263mm	404 × 158 × 275mm	427 × 158 × 275mm
Weight 重量		5.2 Kgs	5.4 Kgs	8 Kgs	10 Kgs	14.7 Kgs	17 Kgs

双级真空泵 Dual Stages

Item No. 型号	For Overseas 外销	WK-215	WK-225	WK-235	WK-245	WK-260	WK-280	WK-2100
	For China 内销	WK-2S0.5C	WK-2S1C	WK-2S1.5C	WK-2S2C	WK-2S3C	WK-2S4C	WK-2S5C
Flow Rare 速率	50 Hz	1.8 CFM	2.5 CFM	3.5 CFM	4.5 CFM	6.0 CFM	8.0 CFM	10.0 CFM
		42 L/MIN	70 L/MIN	100 L/MIN	128 L/MIN	170 L/MIN	226 L/MIN	283 L/MIN
	60 Hz	2.0 CFM	3.0 CFM	4.0 CFM	5.0 CFM	7.0 CFM	9.0 CFM	12.0 CFM
Ultimate Vac. 极限真空	Partial Pressure 分压	2 × 10 ⁻¹ Pa	2 × 10 ⁻¹ Pa	2 × 10 ⁻¹ Pa	2 × 10 ⁻¹ Pa	2 × 10 ⁻¹ Pa	2 × 10 ⁻¹ Pa	2 × 10 ⁻¹ Pa
	Total Pressure 总压	15 Microns	15 Microns	15 Microns	15 Microns	15 Microns	15 Microns	15 Microns
Power 功率		1/4 HP	1/3 HP	1/3 HP	1/2 HP	3/4 HP	1 HP	1 HP
Inlet Port 接口		1/4" Flare	1/4" Flare	1/4" Flare	1/4" & 3/8" Flare	1/4" & 3/8" Flare	1/4" & 3/8" Flare	1/4" & 3/8" Flare
Oil Capacity 泵油容量		140 ml	200 ml	230 ml	350 ml	400 ml	580 ml	490 ml
Dimension 外型尺寸		290 × 124 × 227mm	303 × 127 × 249mm	331 × 127 × 249mm	350 × 140 × 263mm	404 × 158 × 275mm	427 × 158 × 275mm	427 × 158 × 275mm
Weight 重量		5.5 Kgs	8.1 Kgs	8.2 Kgs	10.5 Kgs	15.5 Kgs	16.3 Kgs	17 Kgs

DSZH 带电磁阀真空泵 DSZH Vacuum Pumps With Solenoid Valve



经久耐用 SUPER DURABLE
超高真空度 HIGH VACUUM DEGREE



68mm & 80mm Vacuum Gauges

单级真空泵 Single Stage

Item No. 型号	New Refrigerant Series 新冷媒真空泵					
	For Overseas 外销	WK-125SV	WK-135SV	WK-160SV	WK-180SV	WK-1100SV
Flow Rare 速率	50 Hz	2.5 CFM	3.5 CFM	6.0 CFM	8.0 CFM	10.0 CFM
		70 L/MIN	100 L/MIN	170 L/MIN	226 L/MIN	283 L/MIN
	60 Hz	3.0 CFM	4.0 CFM	7.0 CFM	9.0 CFM	12.0 CFM
Ultimate Vac. 极限真空	Partial Pressure 分压	2 Pa	2 Pa	2 Pa	2 Pa	2 Pa
	Total Pressure 总压	150 Microns	150 Microns	150 Microns	150 Microns	150 Microns
Power 功率		1/4 HP	1/3 HP	1/2 HP	3/4 HP	1 HP
Inlet Port 接口		1/4" Flare	1/4" Flare	1/4" & 3/8" Flare	1/4" & 3/8" Flare	1/4" & 3/8" Flare
Oil Capacity 泵油容量		180 ml	240 ml	430 ml	520 ml	500 ml
Dimension 外型尺寸		290 × 124 × 227mm	303 × 127 × 249mm	350 × 140 × 263mm	404 × 158 × 275mm	427 × 158 × 275mm
Weight 重量		5.7 Kgs	8.3 Kgs	10.3 Kgs	15 Kgs	17.3 Kgs

双级真空泵 Dual Stages

Item No. 型号	New Refrigerant Series 新冷媒真空泵							
	For Overseas 外销	WK-215SV	WK-225SV	WK-235SV	WK-245SV	WK-260SV	WK-280SV	WK-2100SV
Flow Rare 速率	50 Hz	1.8 CFM	2.5 CFM	3.5 CFM	4.5 CFM	6.0 CFM	8.0 CFM	10.0 CFM
		42 L/MIN	70 L/MIN	100 L/MIN	128 L/MIN	170 L/MIN	226 L/MIN	283 L/MIN
	60 Hz	2.0 CFM	3.0 CFM	4.0 CFM	5.0 CFM	7.0 CFM	9.0 CFM	12.0 CFM
Ultimate Vac. 极限真空	Partial Pressure 分压	2 × 10 ⁻¹ Pa	2 × 10 ⁻¹ Pa	2 × 10 ⁻¹ Pa	2 × 10 ⁻¹ Pa	2 × 10 ⁻¹ Pa	2 × 10 ⁻¹ Pa	2 × 10 ⁻¹ Pa
	Total Pressure 总压	15 Microns	15 Microns	15 Microns	15 Microns	15 Microns	15 Microns	15 Microns
Power 功率		1/4 HP	1/3 HP	1/3 HP	1/2 HP	3/4 HP	1 HP	1 HP
Inlet Port 接口		1/4" Flare	1/4" Flare	1/4" Flare	1/4" & 3/8" Flare	1/4" & 3/8" Flare	1/4" & 3/8" Flare	1/4" & 3/8" Flare
Oil Capacity 泵油容量		140 ml	200 ml	230 ml	350 ml	400 ml	580 ml	490 ml
Dimension 外型尺寸		290 × 124 × 227mm	303 × 127 × 249mm	331 × 127 × 249mm	350 × 140 × 263mm	404 × 158 × 275mm	427 × 158 × 275mm	427 × 158 × 275mm
Weight 重量		5.8 Kgs	8.4 Kgs	8.5 Kgs	10.8 Kgs	15.8 Kgs	16.6 Kgs	17.3 Kgs

迷你真空泵 Mini Pumps



Perfect exterior



Lighter 4.2kgs

Item No. 型号	For Overseas 外销	WK-115N	WK-125N
	For China 内销	WK-1N1C	WK-1N1.5C
Flow Rate 速率	50 Hz	1.8 CFM	2.5 CFM
		42 L/MIN	70 L/MIN
	60 Hz	2.0 CFM	3.0 CFM
		50 L/MIN	84 L/MIN
Ultimate Vacuum 极限真空	Partial Pressure 分压	2 Pa	2 Pa
	Total Pressure 总压	150 Microns	150 Microns
Power 功率		1/4 HP	1/4 HP
Inlet Port 接口		1/4" Flare	1/4" Flare
Oil Capacity 泵油容量		140 ML	140 ML
Dimensions 外型尺寸		270 × 101 × 202 mm	270 × 101 × 202 mm
Weight 重量		4.2 Kgs	4.3 Kgs

电源插座 AC Power Supply Plugs



Item	Description	
P01	China Plug	中国
P02	America Plug	美国
P03	Britain Plug	英国
P04	Europe Plug	欧洲
P05	Argentina Plug	阿根廷
P06	Australia Plug	澳大利亚

Item	Description	
P07	Italy Plug	意大利
P08	Brazil Plug	巴西
P09	Japan Plug	日本
P10	Thailand Plug	泰国
P11	Isreal Plug	以色列
P12	South Africa Plug	南非

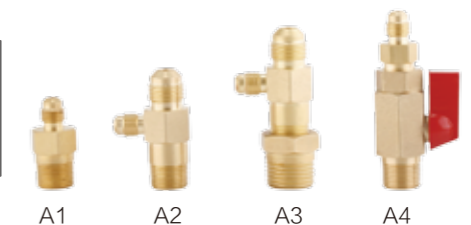
真空泵油 Vacuum Pump Oil

Item No.	Liematic Viscosity (40°)	Index	Flash Point	Flash Point	Type Of Oil
OIL-01	41.4-50.6mm2/s	110	240°C	-10°C	mineral
OIL-02	61.2-74.8mm2/s	130	250°C	-35°C	synthetic di-ester



进气口 Inlet Ports Adapters

Item No.	A1	A2	A3	A4
DES.	1/4"SAE	1/4" & 3/8" SAE	1/4" & 1/2" SAE	1/4" & With Valve



WK-YD250

冷冻油加油泵 Oil Charging Pump

Oil Charging Pump 冷冻油加油泵		
Item No.	型号	WK-YD250
Suitable For Oil 适用冷冻油		All refrigeration oil
Voltage 电压		220V(110V)50Hz(60Hz)
Max.flow 最大流量		160L/H
Max.pressure 最大压力		2.0Mpa/290psi
Power Of Motor 电机功率		1/3Hp
Hose Adapter 管子接口		1/4"SAE
Weight 重量		5.5kgs

冷媒回收机
Recovery Machines
CHINESE PATENTED

- ★Smallest 最小
- ★Lightest 最轻
- ★Fastest 最快
- ★Most Reliable 最可靠



WK-225-11 100V/60HZ
WK-225-22 200V/50HZ



Front Design



Back Design

WK-RC225 ▶
Refrigerant cooling device

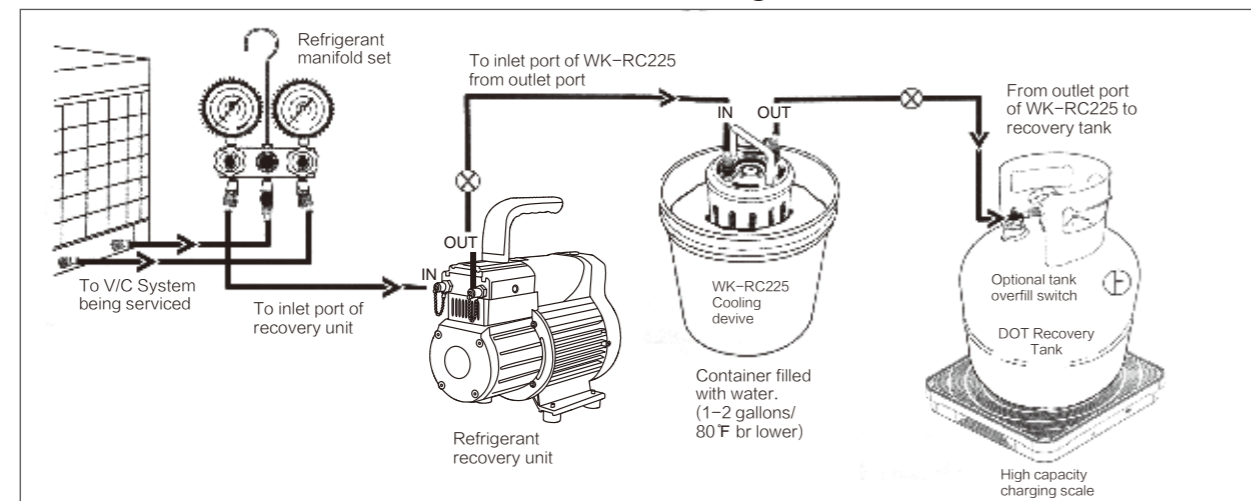
冷媒降温器



产品技术参数 Technical Parameter

WK-225								
Type	推拉 Push Pull	液态 Liquid	气态 Vapor	高温气态 High Temp Vapor(104°F)	推拉 Push Pull	液态 Liquid	气态 Vapor	高温气态 High Temp Vapor(104°F)
	lb/min 英镑/分钟				kg/min 公斤/分钟			
R22	31.53	8.86	0.597	0.86	14.3	4.02	0.271	0.39
R134a	25.66	7.8	0.503	N/A	11.64	3.54	0.228	N/A
R407C	29.14	9.5	0.536	N/A	13.22	4.31	0.243	N/A
R410A	31.7	11.95	0.703	0.816	14.38	5.42	0.319	0.37

回收机和降温器的使用方法 How The Cooling Device Works



DSZH-520 ▶
Refrigerant Recovery Unit
CHINESE PATENTED

最可靠 快速
Reliable Fast



产品技术参数 Technical Parameter

型号 Item No.	DSZH 520 STAN DARD 标准型			
Refrigerant Gas 制冷剂	Cat:R12、R134A、R401C、R500 Cat:R22、R401A/B、R402B、R407C/D、R408A、R409A、R411A/B、R412A、R502、R509 Cat:R402A、R404A、R407A/B、R410A、R507			
Voltage 电源	220V/50Hz			
Motor 电机	1HP AC 电容启动/运转			
Maximum Current 最大电流	6 A			
Compressor 压缩机	Oil-less,Air-cooled,2 Piston Style 无油 空冷 活塞式			
Recovery Rate (kg/min) 制冷剂回收速率	气体	Category III 0.46kg/min	Category IV 0.50kg/min	Category V 0.52kg/min
	液体	3.14kg/min	3.62kg/min	3.70kg/min
	推/拉	9.28kg/min	11.04kg/min	12.44kg/min
High Pressure Switch 高压开关	38bar/550Psi			
Low Pressure Switch 低压开关	Optional 可选择			
Oil Separator 油分离器	Optional 可选择			
80% Liquid Overcharge Protector Option	80%液态过充保护可选择			
Operation Temperature 操作温度	0°C~40°C			
Size 尺寸	485 × 220 × 365mm			
Net Weight 净重	17kg			

